

**Poverty Maps of Villages in Rural  
Community of Ndangalma, Diourbel,  
Senegal  
Based on CBMS Database 2003**

# List of Poverty Indicators

Indicators	Definition
1. Population of working age	Population aged 10 years and above
2. Population active	Employed and unemployed
3. Activity rate	Workforce population of working age
4. Unemployment rate	Number of unemployed labor force
5. Rate of Underemployment	Number of under-employed persons
6. Ratio of employed persons to total population	Employed / population of working age
7. Share of self-employed and family workers in total employment	Total number of own-account workers and workers with family ÷ total employed population
8. Rate of working poor (share of employed people living below the poverty line)	Number of employed persons living in households with income below the poverty ÷ Total number of employed persons
9. Proportion of women employed in the nonagricultural sector	Number of women wage-earners in nonagricultural sector ÷ Total number of wage-earners in nonagricultural sector
10. Dependency ratio	Number of employed and unemployed incurred by the unoccupied
11. Infant mortality rate	Number of children less than 1 year old who died over the total number of children born

# List of Poverty Indicators

Indicators	Definition
12. Child mortality rate	Number of children less than 5 yrs old who died over total number of children under 5 years old
13. Maternal mortality rate	Number of maternal deaths observed in one year over the number of live births in the same year (100,000)
14. Prevalence of major diseases	Number of patients with mental illness to total number of patients
15. Prevalence of Malnutrition	Number of children under 5 years old who are malnourished over the number of children in the same age group
16. Proportion of births attended by skilled health personnel	Number of women who gave birth assisted by having a midwife, doctor, etc.. / Number of women who gave birth
17. Adolescent fertility rate	Number of births per 1,000 girls aged 15-19 years
18. Rate of contraceptive prevalence	Use of modern contraceptive methods
19. Coverage of antenatal care	Number of clinic visits of pregnant women during pregnancy
20. Family planning needs unmet	Access to family planning clinic for women of childbearing age

# List of Poverty Indicators

Indicators	Definition
21. Gross enrollment ratio	Number of children in primary school / Number of children 7-14 years old
22. Net enrollment	Number of children 7-14 years old in primary school / Number of children 7-14 years old
23. Repetition rate	Number of students who resumed a year in class / number of students in that year
24. Dropout rate	Number of students who dropped out of school during the year / number of students in that year
25. Completion rates	Proportion of pupils starting grade of study in primary and finishing in sixth year
26. Literacy rate	Number of adults who can read and write / Total number of adults
27. Households homeowners	Number of households who own their homes / Total number of households
28. Number of persons per room	Number of persons / number of rooms housing
29. Radio ownership rates	Number of households (population) with a radio / Total number of households (population)
30. TV ownership rates	Number of households (population) with a TV / Total number of households (population)
31. Car ownership rates	Number of households (population) with car / Total number of households (population)

# List of Poverty Indicators

Indicators	Definition
32. Use of mosquito nets	Number of households (population) who use mosquito nets / Total number of households (population)
33. Rates of computer ownership	Number of households (population) with microcomputers / Number of total households (population)
34. Average area owned land / household	Total land owned by households / Number of households
35. Total area used by households / Number of households	Total area used by households / Number of households
36. Average Number of livestock (large animals)/ household	Total number of households with livestock / Number of households
37. Average Number of livestock (small animals) / household	Total number of households with livestock (small animals) of households / Number of households
38. Use of solid fuels	Proportion of households who use solid fuels
39. Access to a modern WC	Proportion of households with access to a modern WC
40. Domestic migration: migration intensity household with at least one internal migrant	Number of households with at least one domestic migrant / Number of rooms housing
41. International Migration: Migration intensity	Household with at least one international migrant

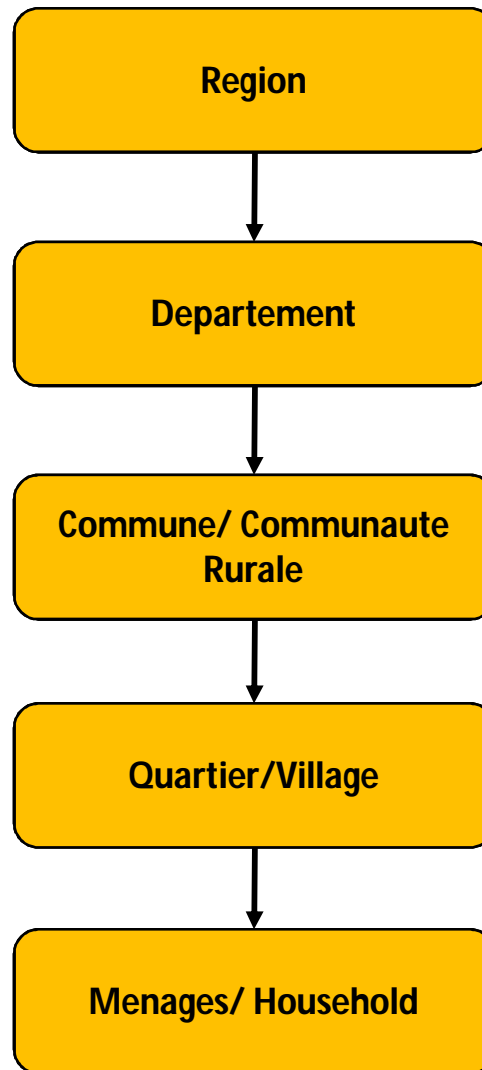
# List of Poverty Indicators

Indicators	Definition
42. Reasons for leaving	Distribution of migrants as reasons for departure
43. Country of destination	Distribution of migrants by country of destination
44. Existence and regularity of transfers to the household	The regularity of transfers from migrants
45. Profile of the international migrant before departure (gender, age, marital status and main occupation)	Description of the profile of international migrant
46. Drinking water	Number of households (population) with access to safe water / total number of households
47. Electricity	Number of households with access to electricity / total number of households
48. Telephone	Number of households with access to telephone / Total number of households
49. Distance to basic infrastructure	Percentage of households (population) compared to the distance in time to access basic infrastructure (markets, health post etc.)
50. System of sewage disposal	Number of households with sewerage / total number of households
51. System of garbage collection	Number of households with access to the system of garbage collection / Total number of households

# List of Poverty Indicators

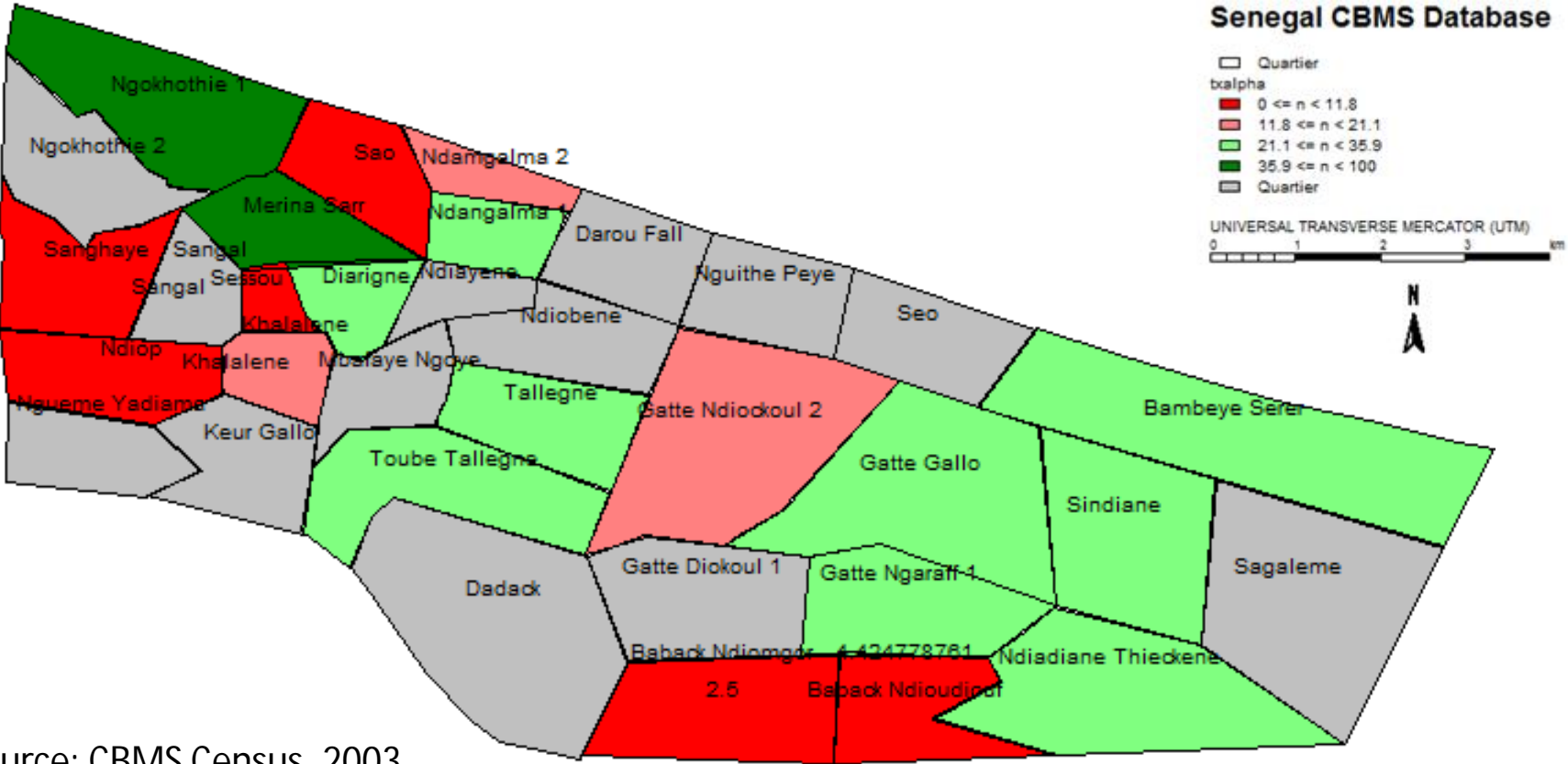
Indicators	Definition
52. Number of health centers	Number of health centers in the local community
53. Number of health posts	Number of health posts in the local community
54. Number of elementary schools	Number of elementary schools in the local community
55. Number of boxes for toddlers	Number of boxes of toddlers in the local community
56. Multidimensional poverty	The level below which the household is poor
57. Incidence of multidimensional poverty	Number of poor households/ Total number of households
58. Incidence of subjective poverty	Number of poor households / Total number of households

# Administrative Level





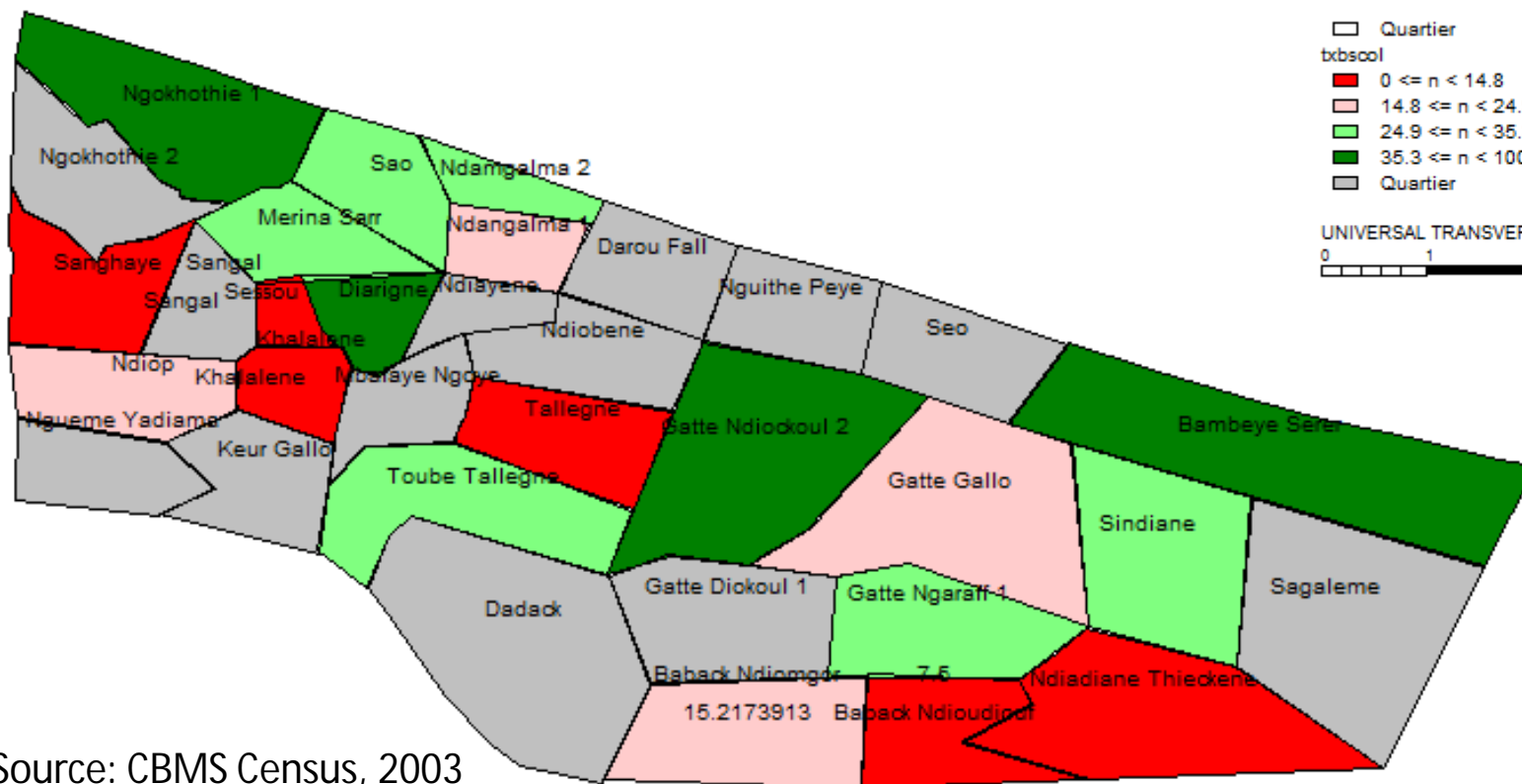
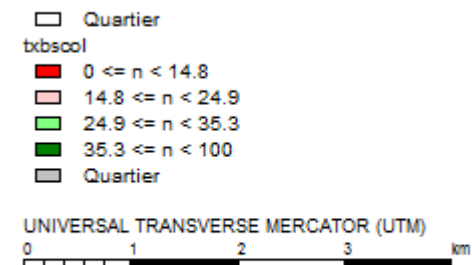
# Proportion of Adults 15 years old and over who are Literate, Rural Community of Ndangalma, Diourbel, Senegal, 2003



Source: CBMS Census, 2003

# Proportion of Children less than 14 years old Attending School, by village, Rural Community of Ndangalma, Diourbel, Senegal, 2003

Senegal CBMS Database



Source: CBMS Census, 2003