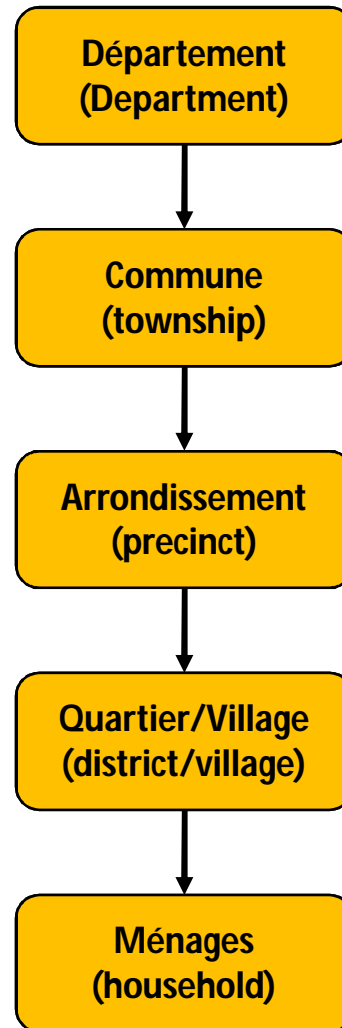


**Poverty Maps of
Arrondissement of Adogbe,
Commune of Cove, Department
of Zou, Benin
Based on CBMS Database 2006**

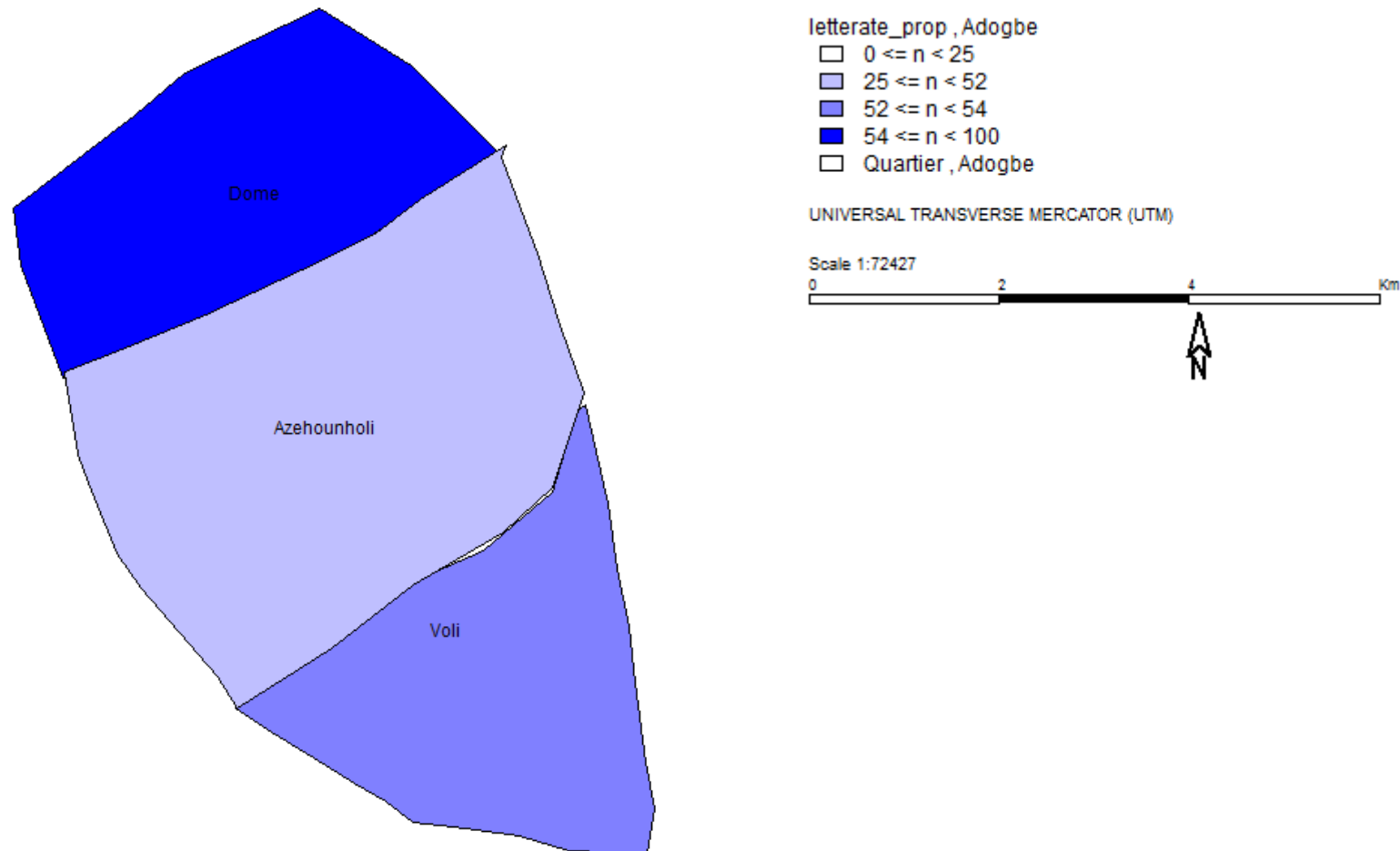
Administrative Level



List of Poverty Indicators

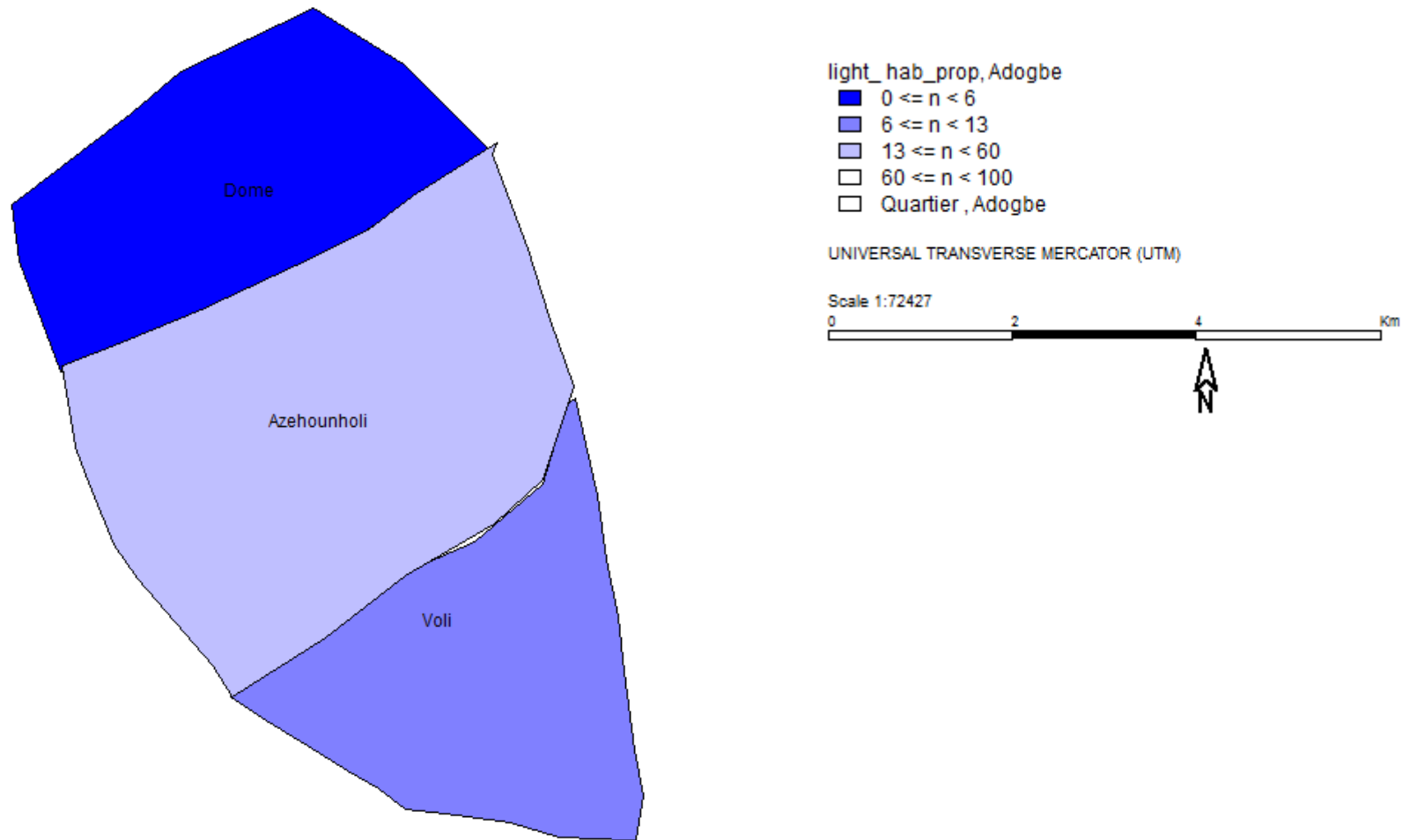
Indicators	Definition
1. Proportion of literate members	Proportion of members who had never been at school
2. Proportion of households who live in light habitat	Proportion of households living in household without comfort
3. Proportion of households with light materials for roof	Proportion of households with Wood/board, palm/bamboo, or straw as material for roof
4. Proportion of households with light building materials	Proportion of households with Terre battue or autres kind of wall
5. Proportion of households with poor energy for cooking	Proportion of households who use firewood, crop residue and others as cooking fuel
6. Proportion of households without access to safe water	Proportion of households who get their drinking water from unprotected well
7. Proportion of households without access to sanitary toilet facility	Proportion of households who use hole or do not have toilets
8. Proportion of households with poor source of light	Proportion of households who use oil lamp, candle and other lanterns as source of light
9. Proportion of households who are not land owners	Proportion of households who are tenants, live in housing by employee or free accommodation
10. Proportion of households without radio	Proportion of households without own radio
11. Proportion of households without bicycle	Proportion of households without own bicycle

Proportion of Literate Members, Arrondissement of Adogbe, Commune of Cove, 2006



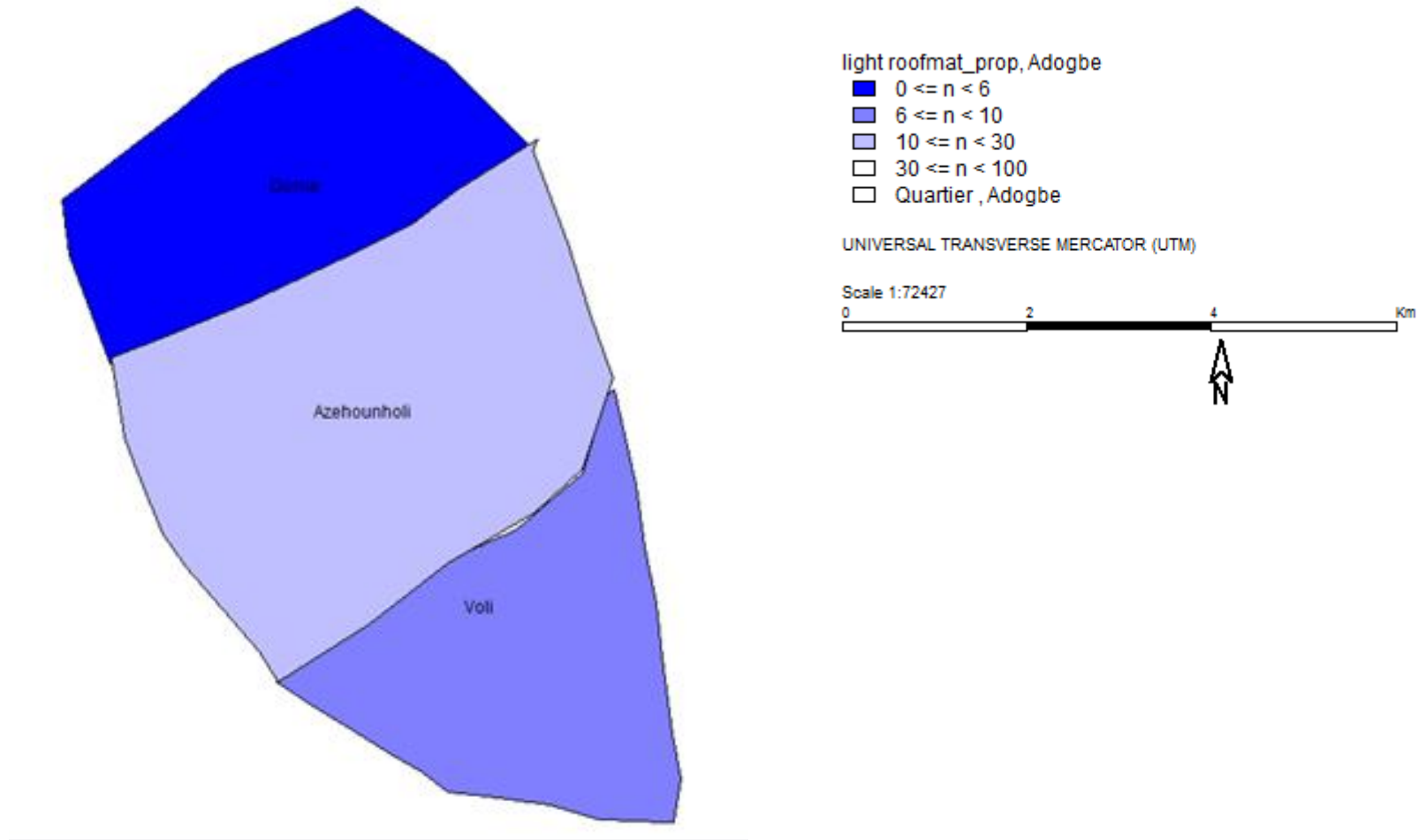
Source: CBMS Census, 2006

Proportion of Households who live in Light Habitat, Arrondissement of Adogbe, Commune of Cove, 2006



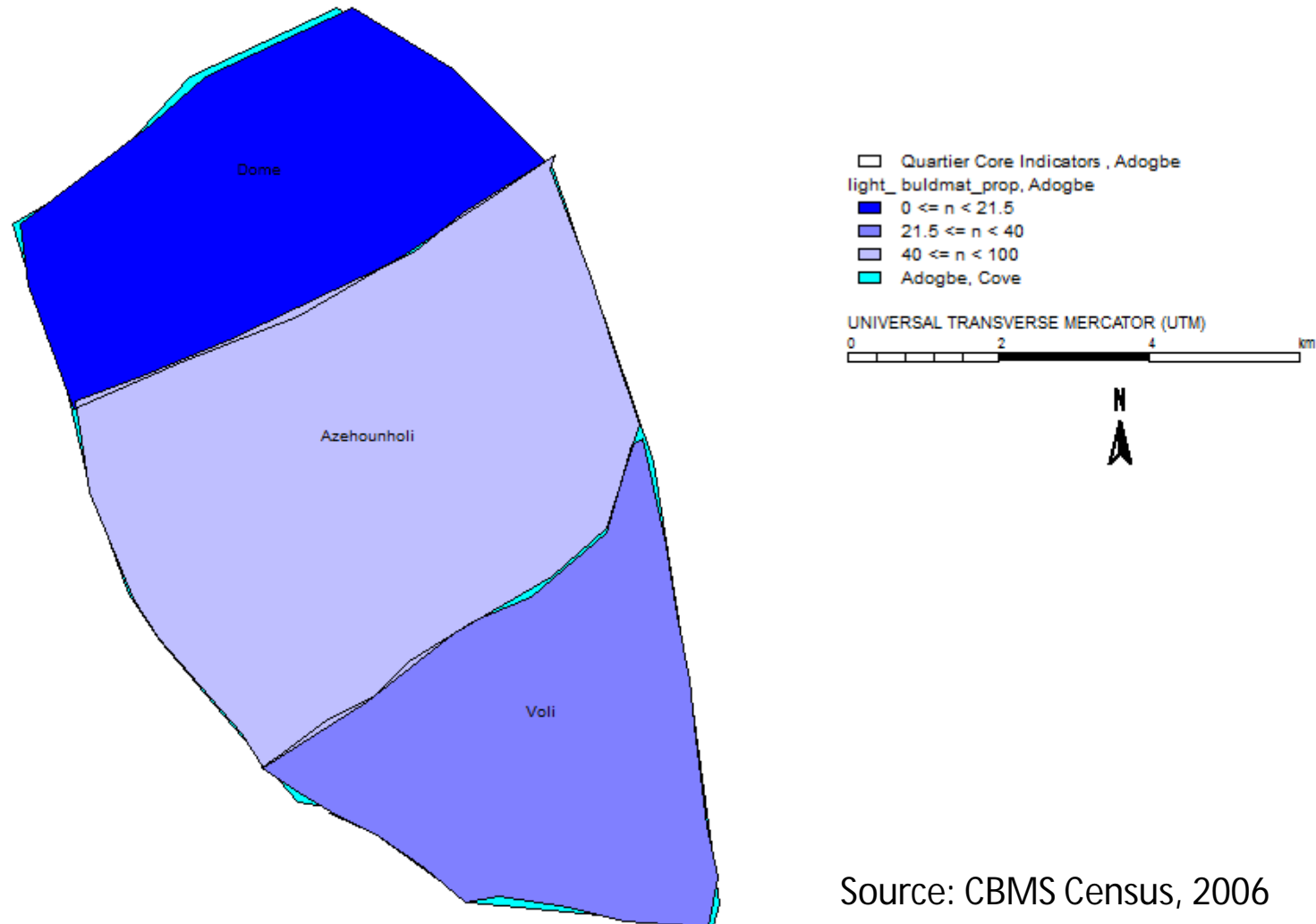
Source: CBMS Census, 2006

Proportion of Households with Light Materials for Roof, Arrondissement of Adogbe, Commune of Cove, 2006



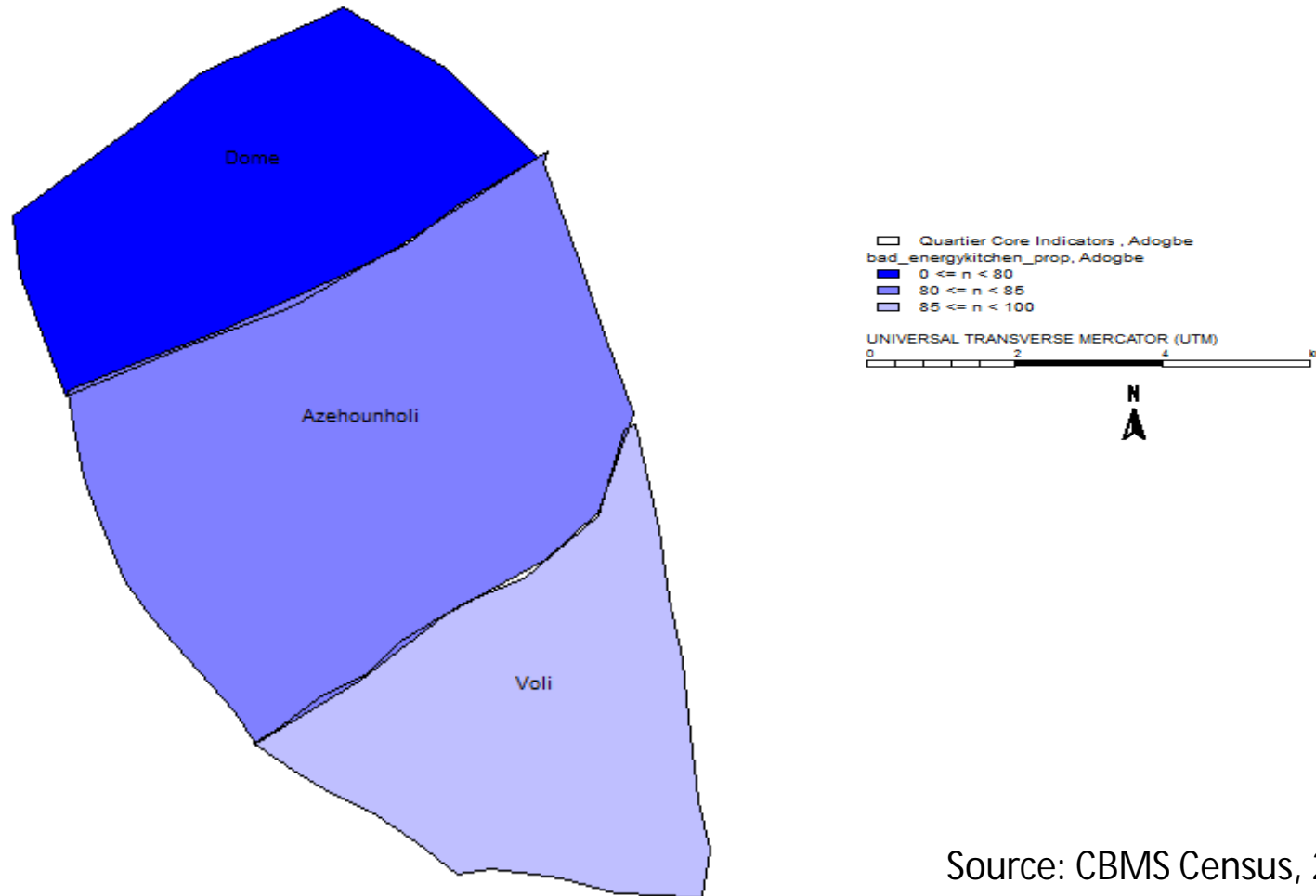
Source: CBMS Census, 2006

Proportion of Households with Light Building Materials, Arrondissement of Adogbe, Commune of Cove, 2006



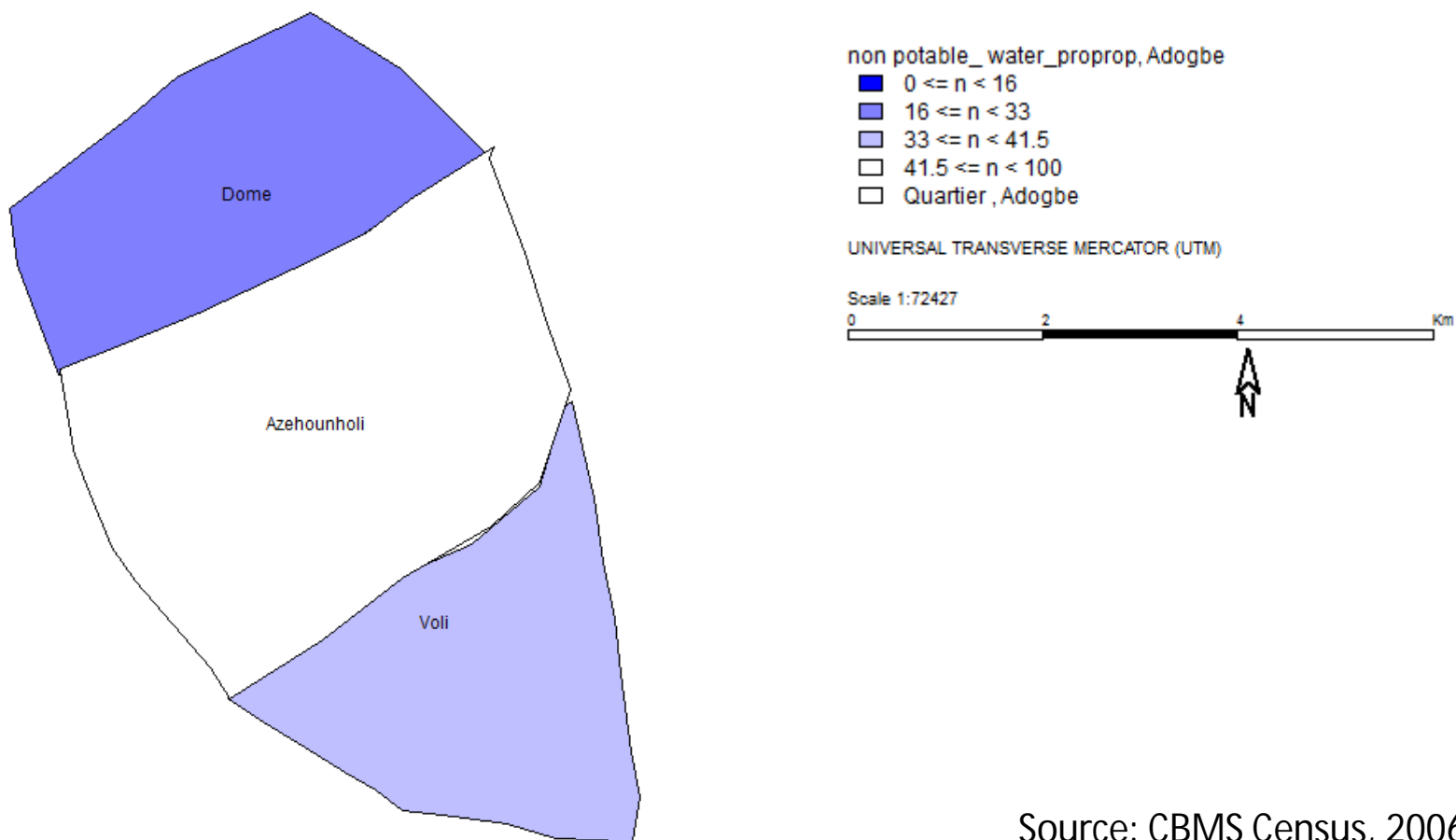
Source: CBMS Census, 2006

Proportion of Households with Poor Energy for Cooking, Arrondissement of Adogbe, Commune of Cove, 2006



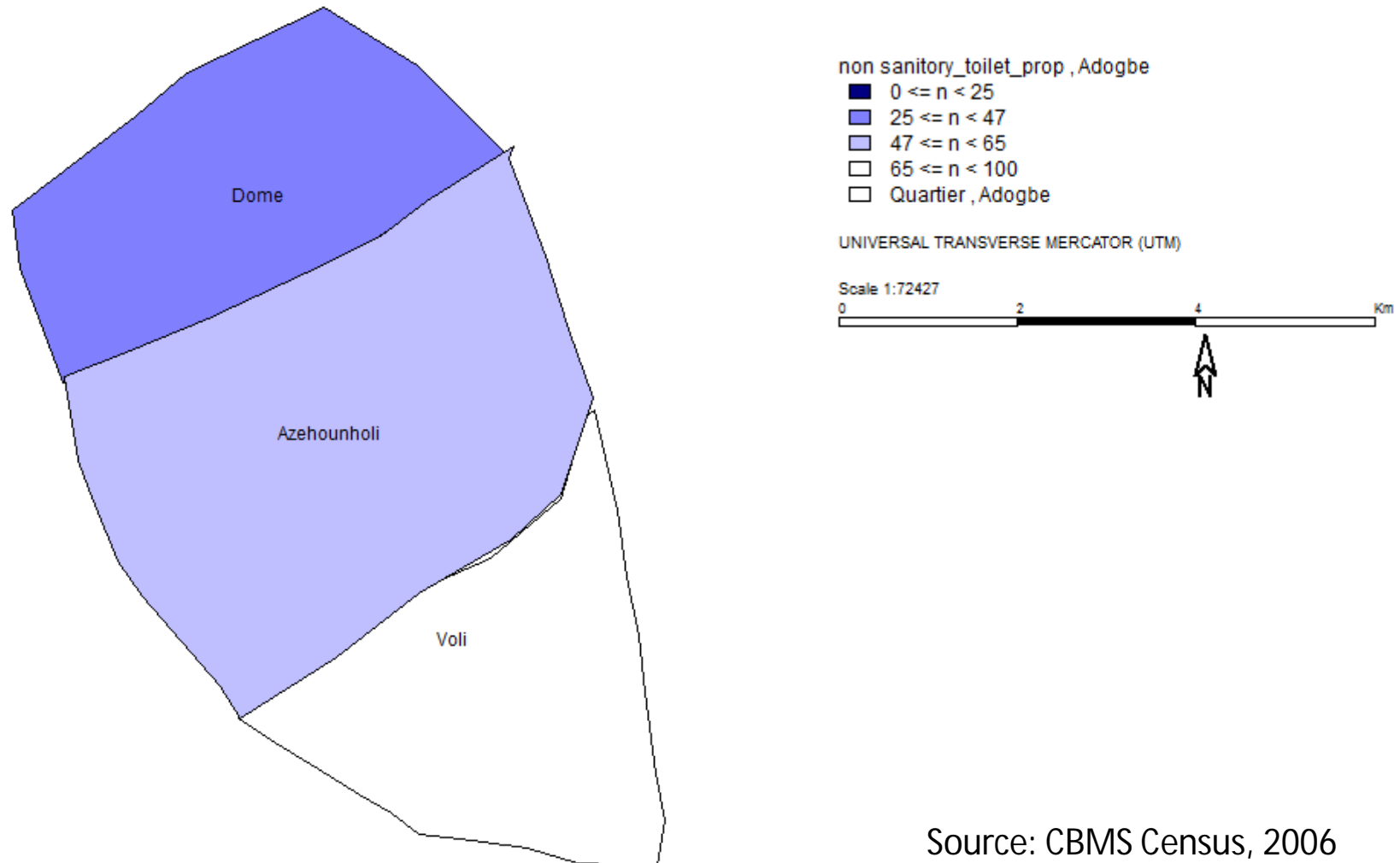
Source: CBMS Census, 2006

Proportion of Households without Access to Safe Water, Arrondissement of Adogbe, Commune of Cove, 2006



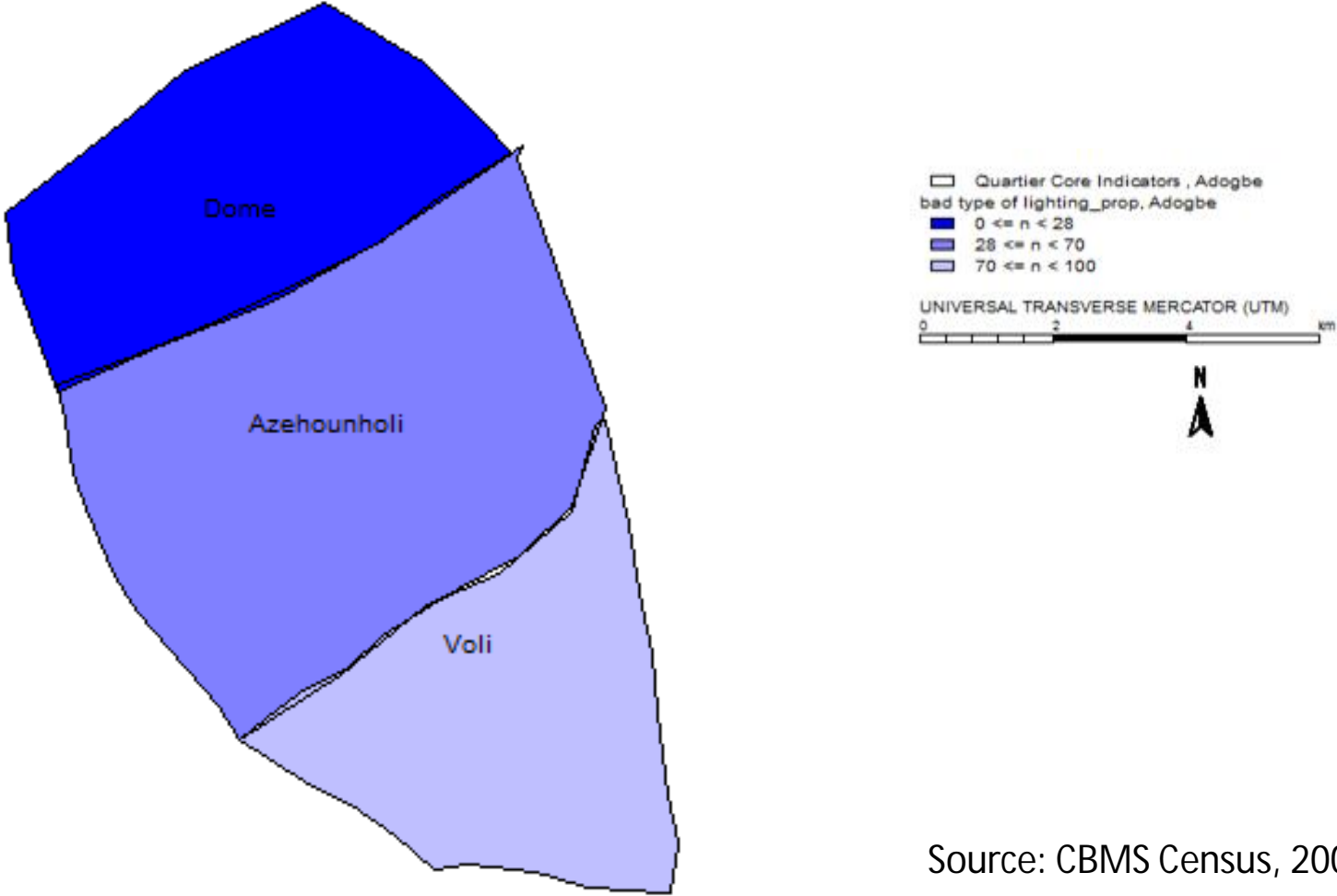
Source: CBMS Census, 2006

Proportion of Households without Access to Sanitary Toilet Facility, Arrondissement of Adogbe, Commune of Cove, 2006



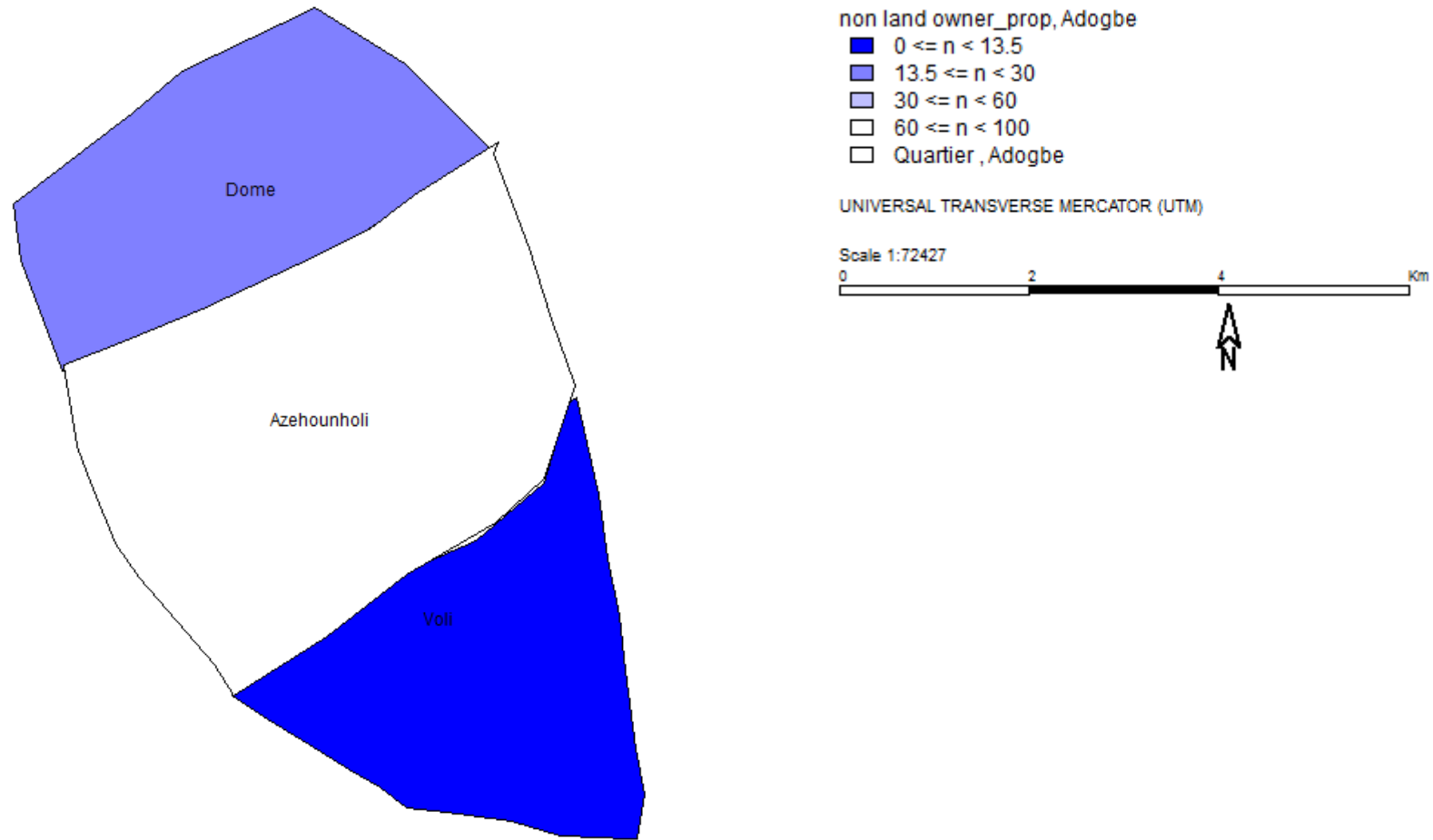
Source: CBMS Census, 2006

Proportion of Households with Poor Source of Light, Arrondissement of Adogbe, Commune of Cove, 2006



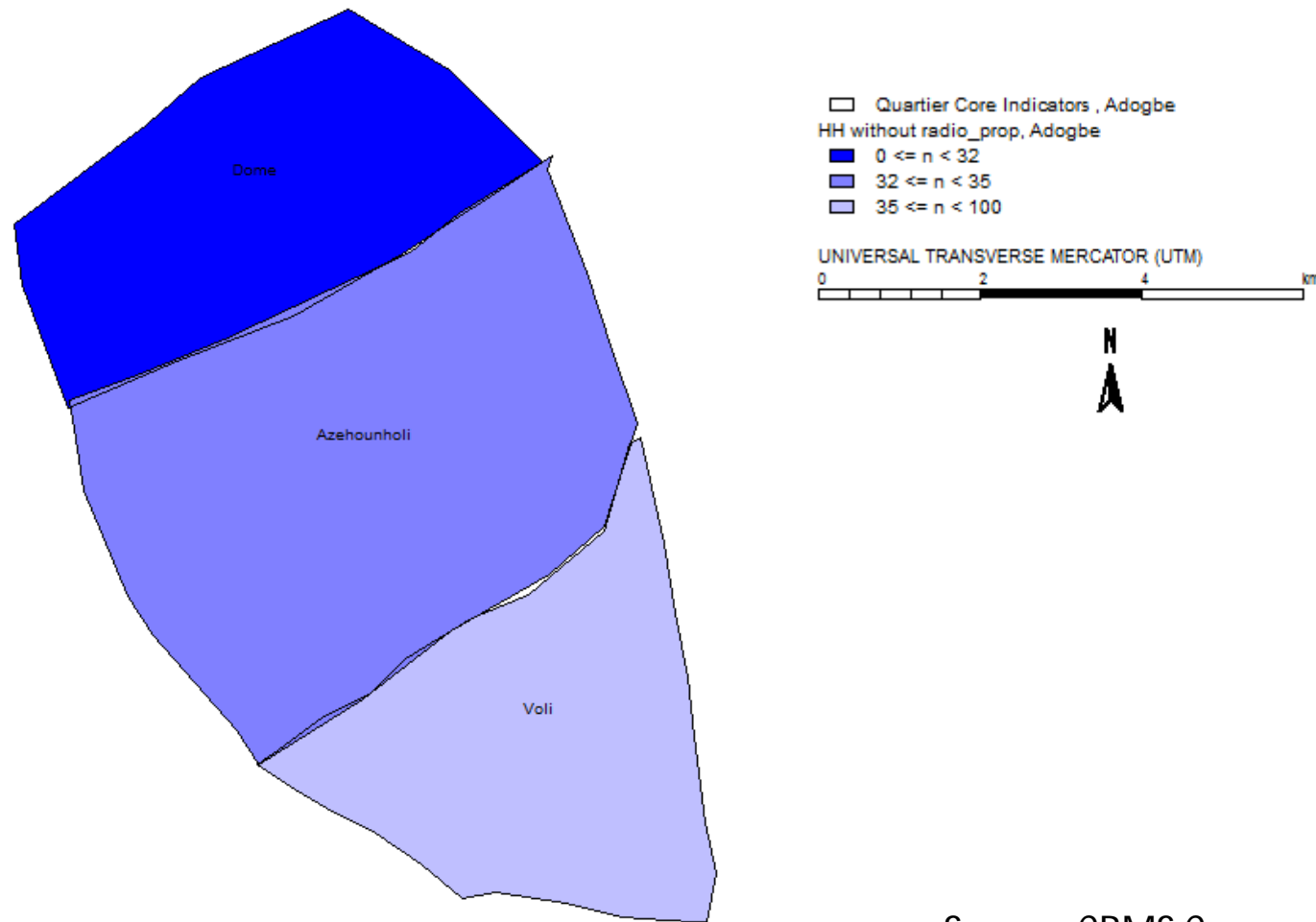
Source: CBMS Census, 2006

Proportion of Households who are not Land Owners, Arrondissement of Adogbe, Commune of Cove, 2006



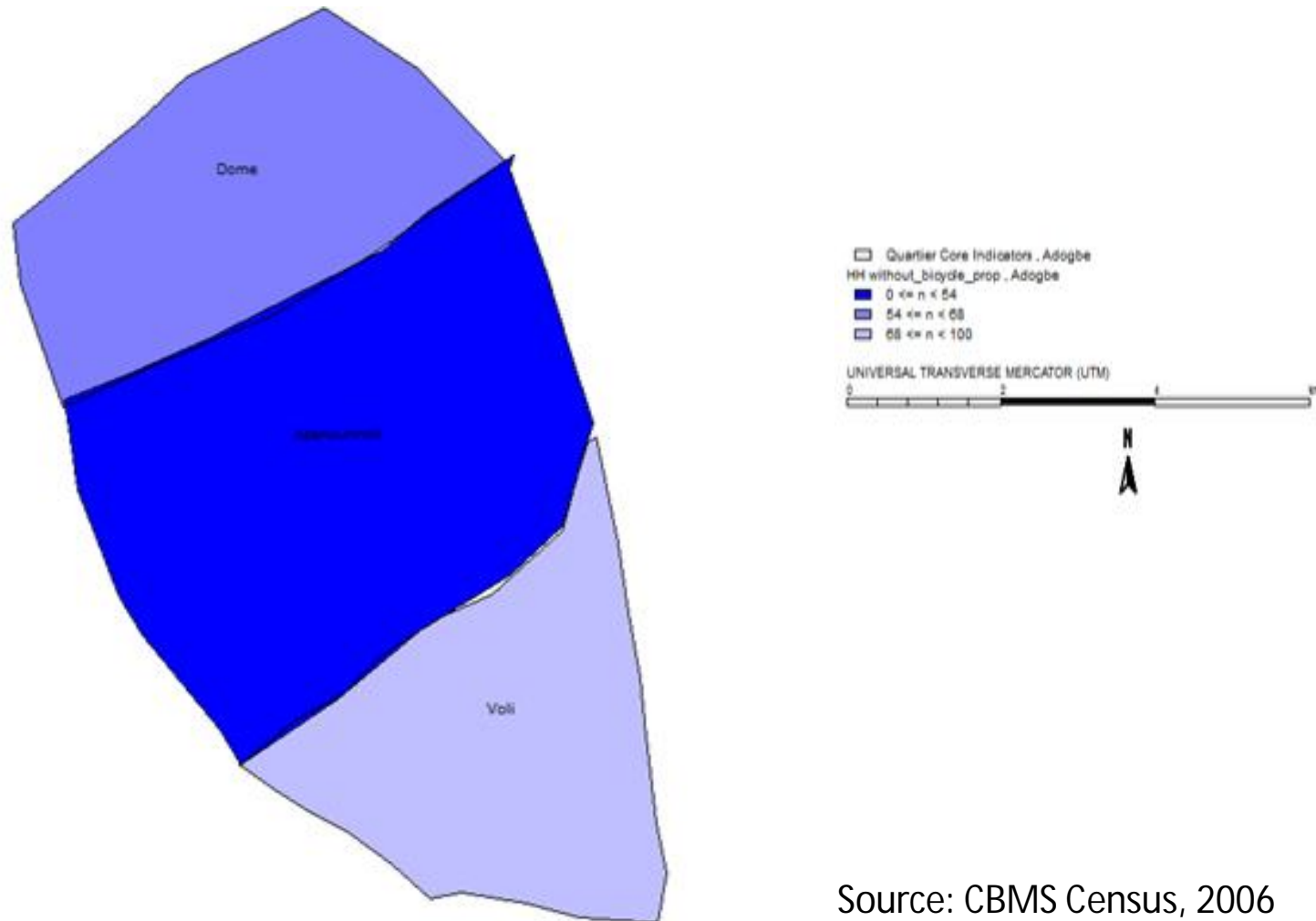
Source: CBMS Census, 2006

Proportion of Households without Radio, Arrondissement of Adogbe, Commune of Cove, 2006



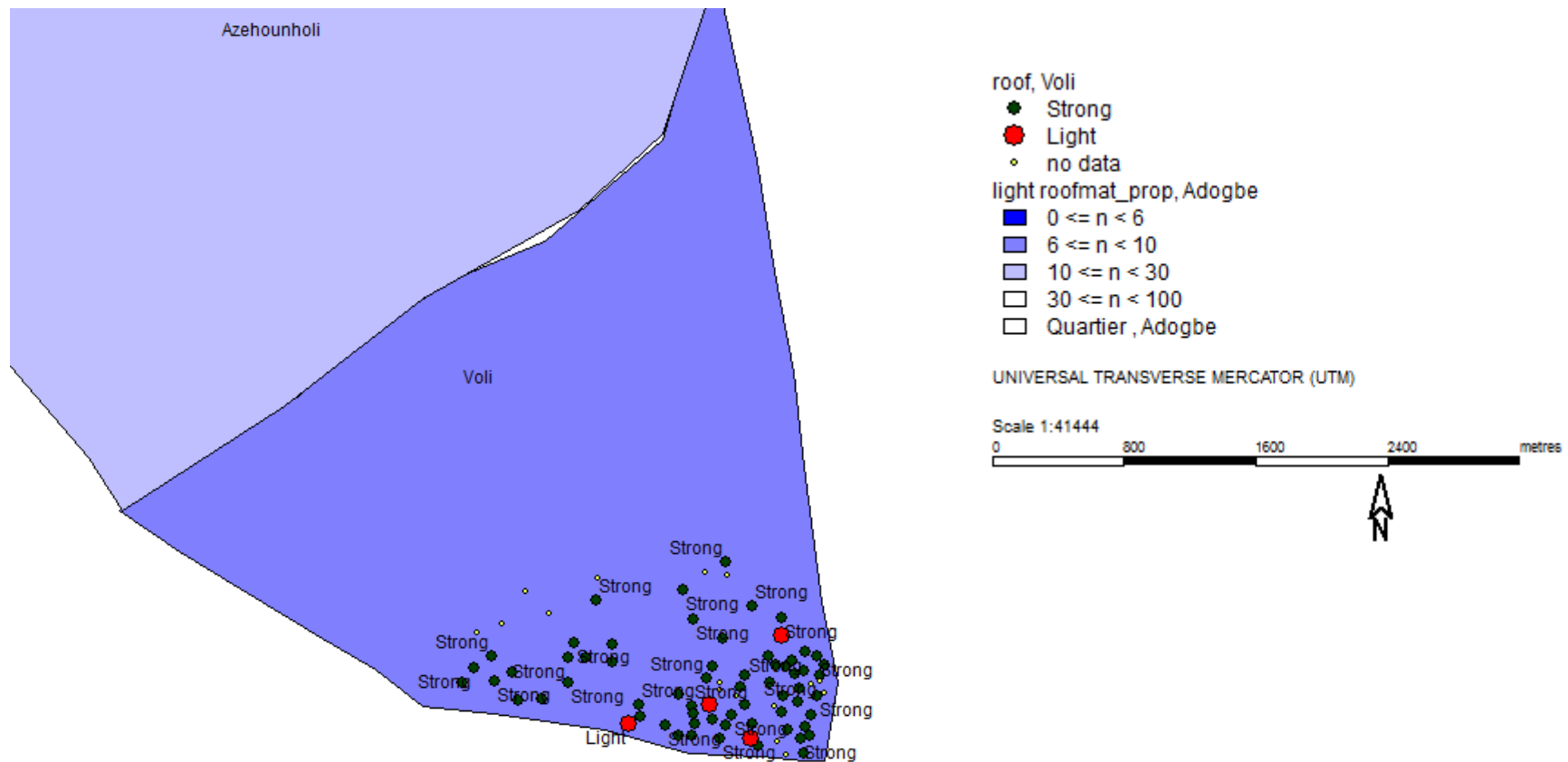
Source: CBMS Census, 2006

Proportion of Households without Bicycle, Arrondissement of Adogbe, Commune of Cove, 2006



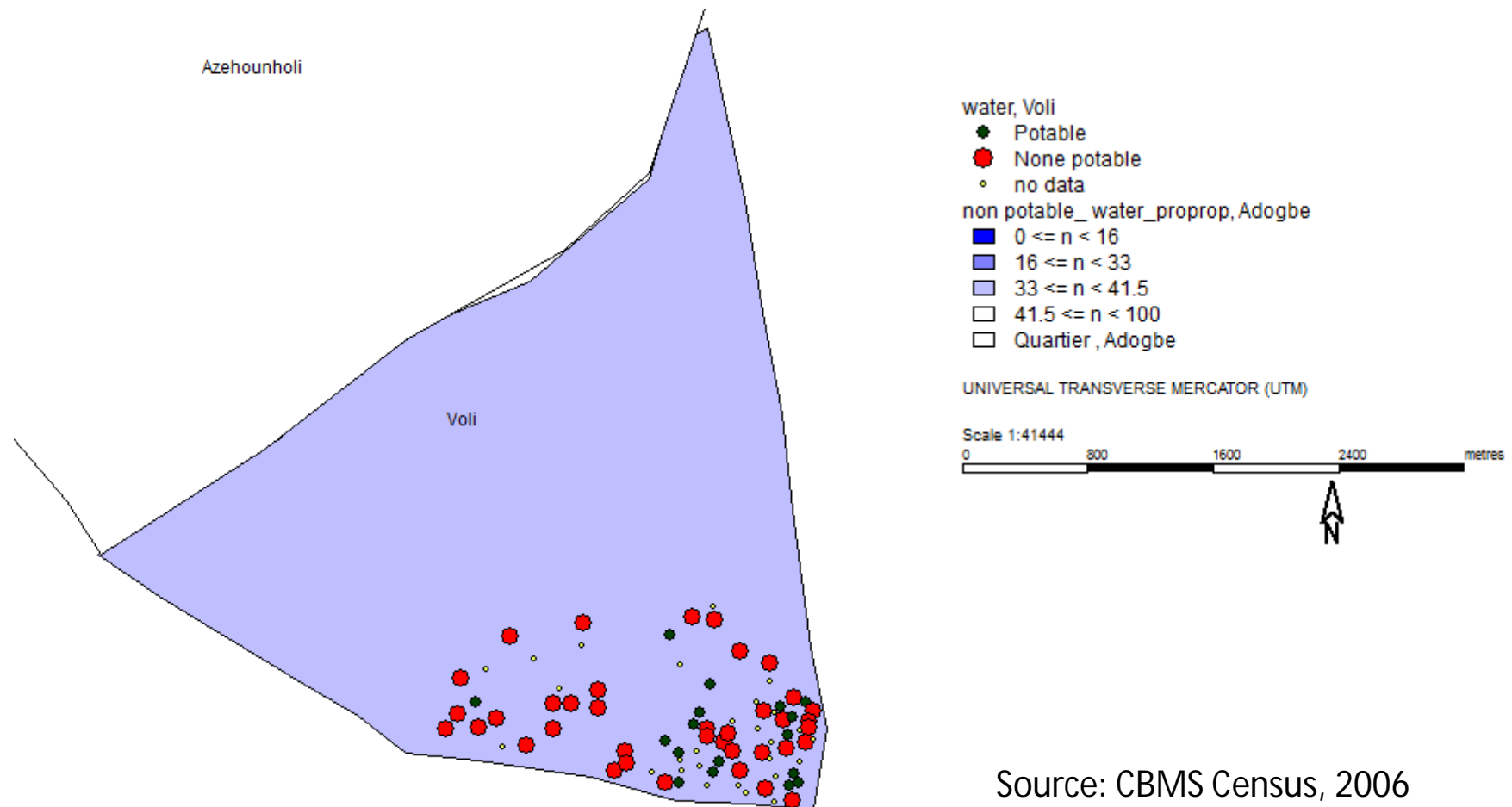
Source: CBMS Census, 2006

Location of Households with Light Materials for Roof, Village of Voli, Arrondissement of Adogbe, Commune of Cove, 2006



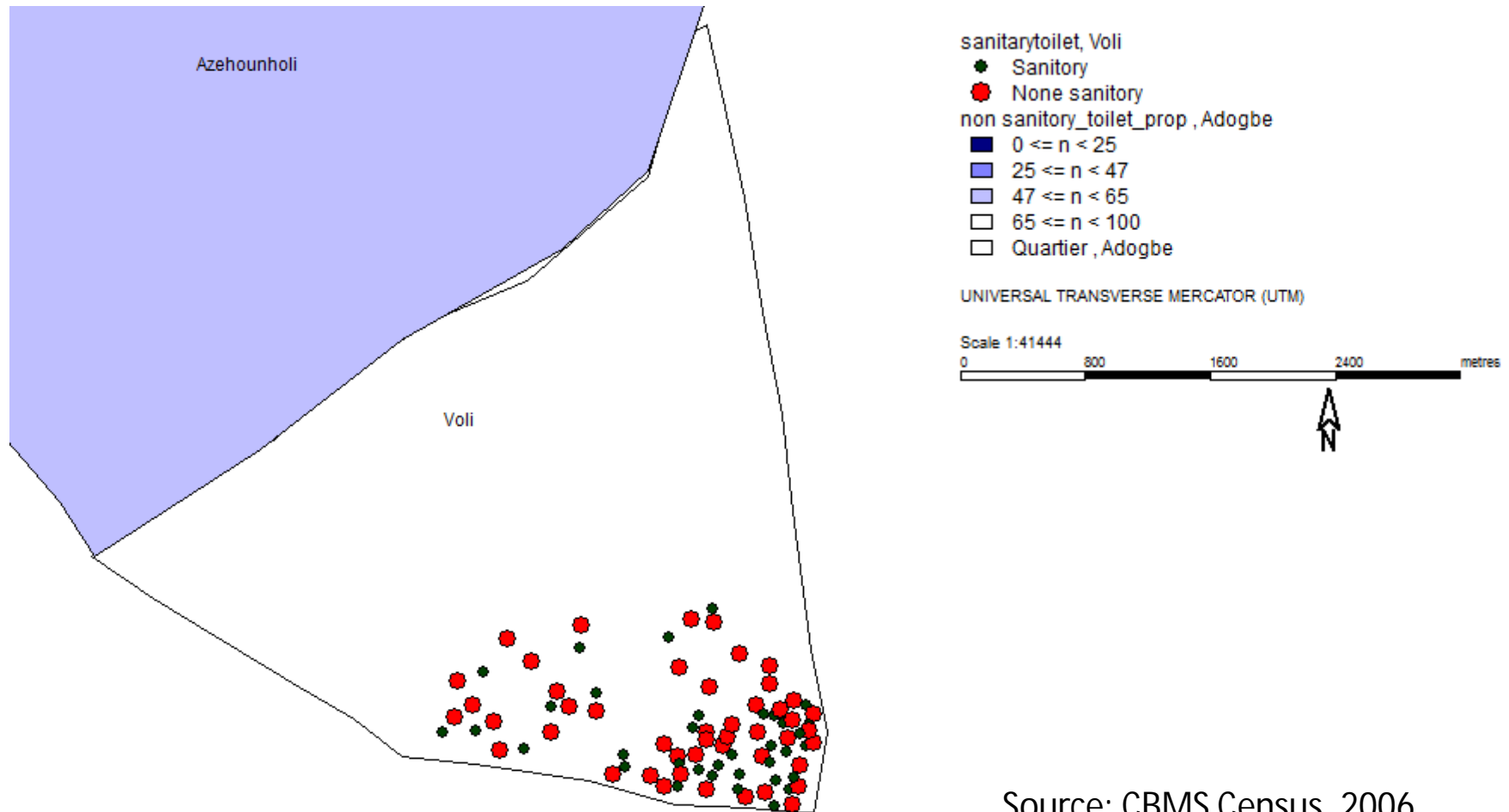
Source: CBMS Census, 2006

Location of Households with no Access to Safe Water Supply, Village of Voli, Arrondissement of Adogbe, Commune of Cove, 2006



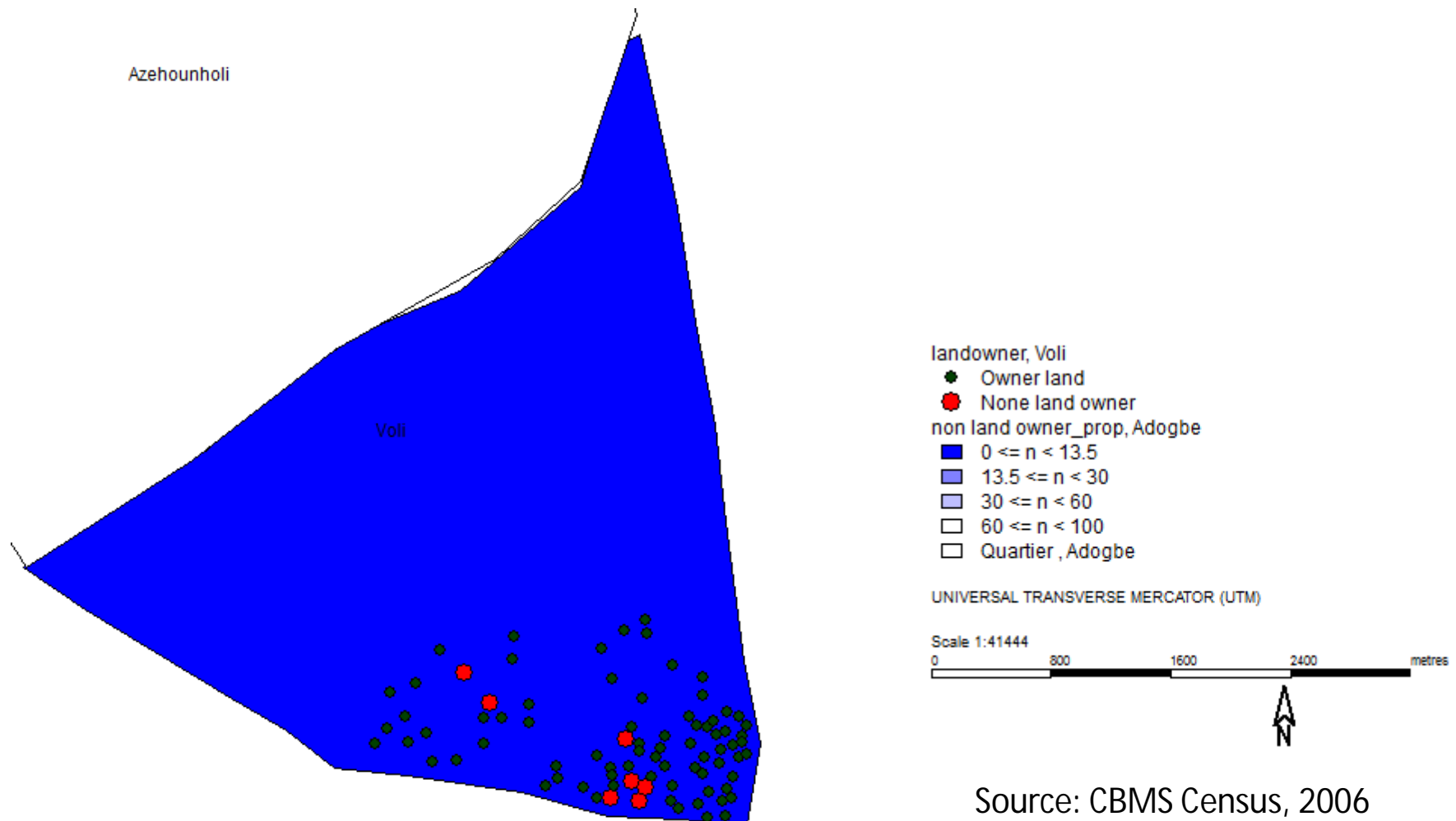
Source: CBMS Census, 2006

Location of Households with no Access to Sanitary Toilet Facility, Village of Voli, Arrondissement of Adogbe, Commune of Cove, 2006



Source: CBMS Census, 2006

Location of Households who are Land Owners, Village of Voli, Arrondissement of Adogbe, Commune of Cove, 2006



Source: CBMS Census, 2006