

The logo for the Community-Based Monitoring System International Network is located in the bottom-left corner. It features a central circular emblem with a black starburst design and the text "Community-Based Monitoring System International Network" around its perimeter. This emblem is surrounded by several colorful, multi-pointed starburst shapes in shades of blue, green, orange, and purple. A vertical blue bar is positioned behind the main logo.

# Stata Hands-on

**Jasminda Quilitis**

**Workshop on Preparation of Local SDG Report  
using CBMS Data For LGU Carmona and Panabo City  
CBMS Network Office, January 9, 2019**

- ▶ Stata is a statistical software for Data Science
- ▶ Developed in 1985, latest version of Stata was released in 2017 (version 15)
- ▶ <https://www.stata.com/>



# STATA Interface

---

- ▶ Command
- ▶ Results
- ▶ Review
- ▶ Variables
- ▶ Properties



# 3 ways to interact with STATA

---

- ▶ Menu System and Dialog Boxes
- ▶ Command Window
- ▶ Do-file Editor



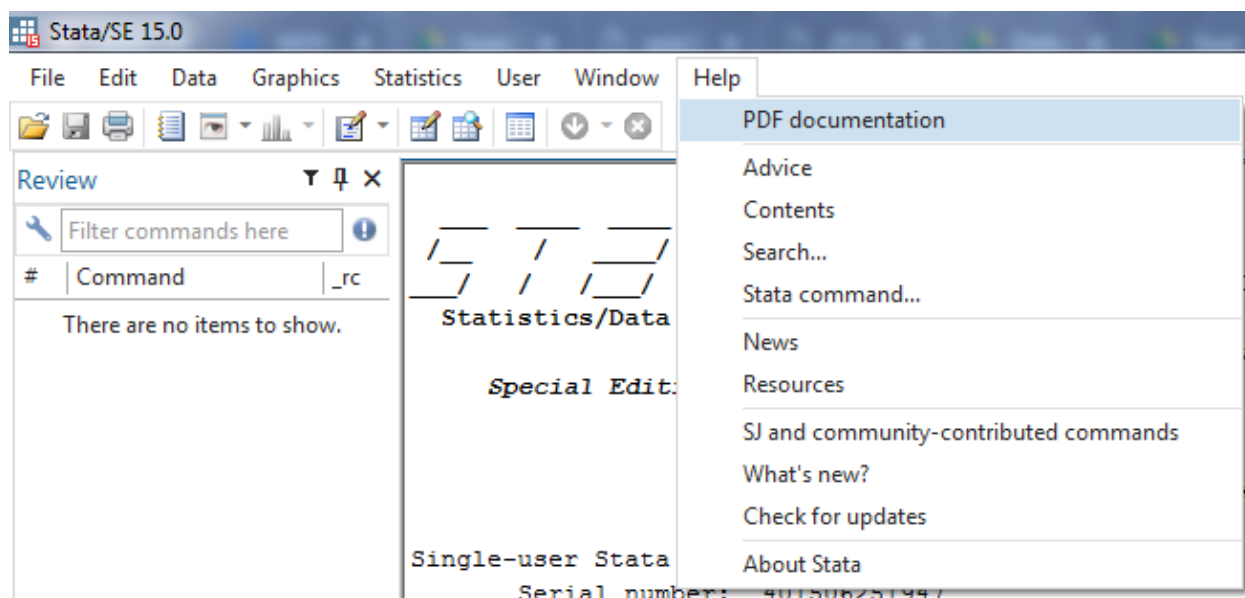
# STATA Basic Commands

---

- ❖ Saving Log Files
- ▶ **Use** / Import data
- ▶ **Clear**
- ▶ **Tabulation**
- ▶ Operators
- ▶ **Generate** and **Replace**
- ▶ **Labels**
- ▶ **Summarize** data
- ▶ **Merge** data
- ▶ **Drop** and **Keep** variables
- ▶ **Save** dataset



- ▶ From the Main Menu:



- ▶ Video Tutorials (<https://www.stata.com/links/video-tutorials/>)
- ▶ Getting started with Stata  
([https://www.youtube.com/watch?v=YAVq99iUTTI&list=PLN5lSkQdgXWnHC\\_5-ebmFZUNdpKcoLtDT](https://www.youtube.com/watch?v=YAVq99iUTTI&list=PLN5lSkQdgXWnHC_5-ebmFZUNdpKcoLtDT))



**Further inquiries about CBMS may be sent through:**

**Community-Based Monitoring System (CBMS) Network Office**

De La Salle University-Angelo King Institute for Economic and Business Studies  
10th Floor, De La Salle –Angelo King International Center,  
Arellano corner Estrada Streets, Malate, Manila, Philippines, 1004

Contact Number: (632) 5262067; 2305100 LOC. 2641

E-mail address: [cbms.network@gmail.com](mailto:cbms.network@gmail.com)

Website: <https://www.pep-net.org/about-cbms>

Facebook: <https://www.facebook.com/CBMSNetwork/>

