

**Using CBMS for SDG Profiling:
Case of Gikindu Location,
Murang'a County, Kenya**

By Phyllis Machio

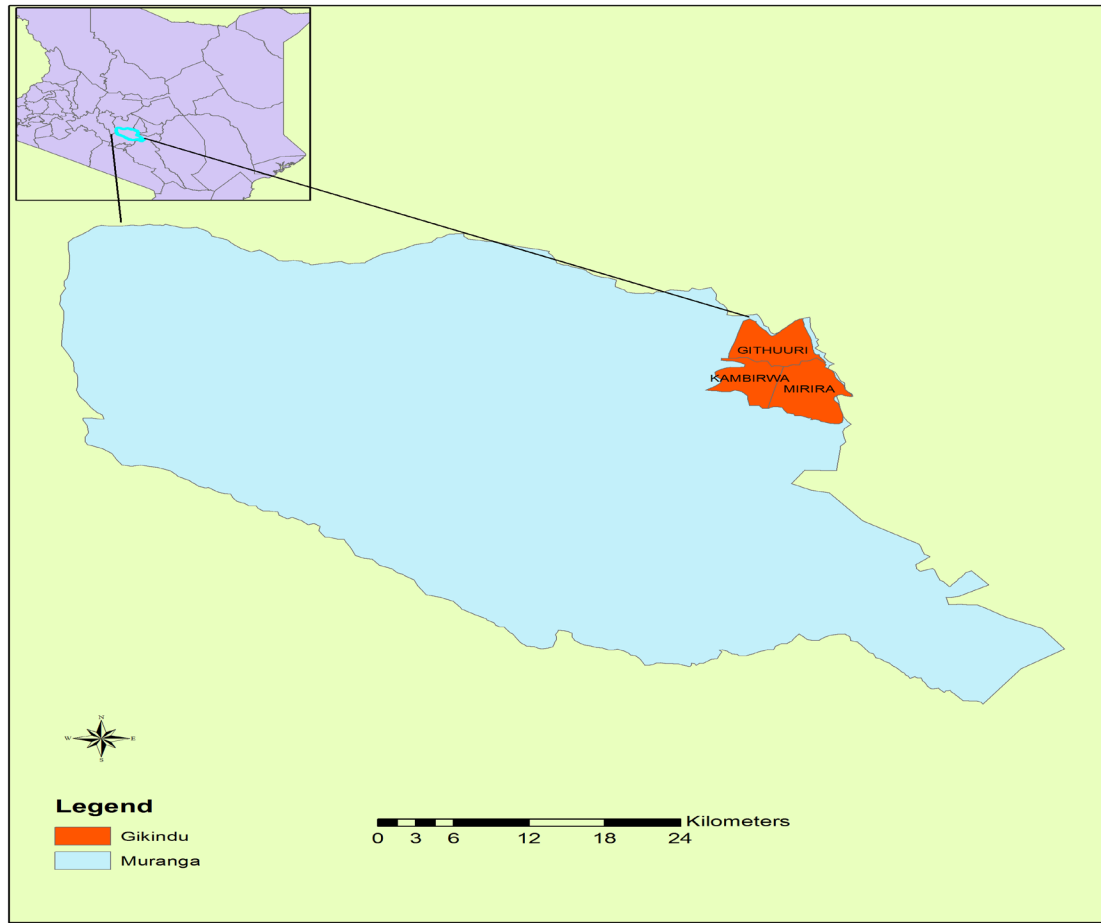
Study site

- Gikindu location is found in Murang'a County, Kenya.
 - Main stay is agriculture.
 - Engaged mainly in small scale crop farming and livestock husbandry
 - Grown crops are food crops namely maize, beans, potatoes, cassava.
 - The livestock reared include the indigenous breeds of cattle, goats and sheep.

Murang'a county women



Map of Gikindu location



Summary of SDG results

Indicators	Figures
Proportion of individuals whose daily consumption expenditure is below \$1.9 \$1.25	44.86% 18.01%
Proportion of individuals whose monthly consumption expenditure is below Kshs. 3,252	23.92%
Proportion of households that experienced hunger due to food shortage in the last 3 months	1.55%
Proportion of children who are underweight and those severely underweight	18.95%
Number of maternal deaths	0
Number of children 0-5 years who died in the past 1 year	3

Summary of SDG indicators

- **43.55%** Do not have access to safe drinking water
- **90.6%** do not have access to sanitary facilities
- **69.42%** do not have access to electricity

- SDG Goal 4. Ensure inclusive and equitable quality education and promote lifelong learning opportunities for all

SDG target

- By 2030, ensure that all girls and boys have access to quality early childhood development, care and pre-primary education so that they are ready for primary education
- Statistics from Gikindu show that 26% of children aged 3-5 years have not yet enrolled in school

ECDE Programs in Murang'a

- As part of the comprehensive ECDE program funded by the County Government,
 - Murang'a County has hired one thousand (1000) ECDE caregivers
 - The county also provides free lunch to the pupils and learning aids for all the public ECDE centers in the County

SDG target

- By 2030, ensure that all girls and boys complete free, equitable and quality primary and secondary education leading to relevant and effective learning outcome

Net enrolment rates

	Primary school net enrolment rate	Secondary net enrolment rate
Male	93.7	66.4
Female	93.7	72.9
Total	93.7	69.6

Children of secondary school going age not in secondary: where are they?

	Male	Female	Total
	Proportion	Proportion	Proportion
Out of school	26.1	12.3	24.4
In Pre-secondary	68.6	80.4	71.1
In post-secondary	5.3	7.2	4.4

Programs in Murang'a

- An annual bursary kitty of 70million shillings has also been established since the year 2013 in raising school fees for the vulnerable and needy pupils in tertiary and secondary institutions of learning.

SDG target

- By 2030, ensure equal access for all women and men to affordable and quality technical, vocational and tertiary education, including university

Table 3: Distribution of youths aged 18 to 25 years in the education system

	In tertiary institution	In vocational school	In college	In university	Still in primary and secondary	Not in school or college
Full sample	13.9	3.7	6.6	3.5	17	69
Male	16.2	5.4	6.6	4.2	20.4	63.3
Female	11.8	2.3	6.7	3	14.2	74

Programs in Murang'a County

- The County Government has tailored an initiative dubbed 'fundi kwa vijana' to absorb the youths who for various reasons fail to proceed to secondary schools or tertiary institutions of learning into vocational centers of learning.

Programs in Murang'a County

- Through this program, more than 10,000 young men have acquired technical skills on diverse vocational concentrations such as carpentry, masonry, hair and beauty, motor vehicle mechanics, pastry and bakery, driving among others.
- These short courses are being offered at no charge with an intention of securing the youths with technical capabilities for self-sufficiency.

Thank you

