

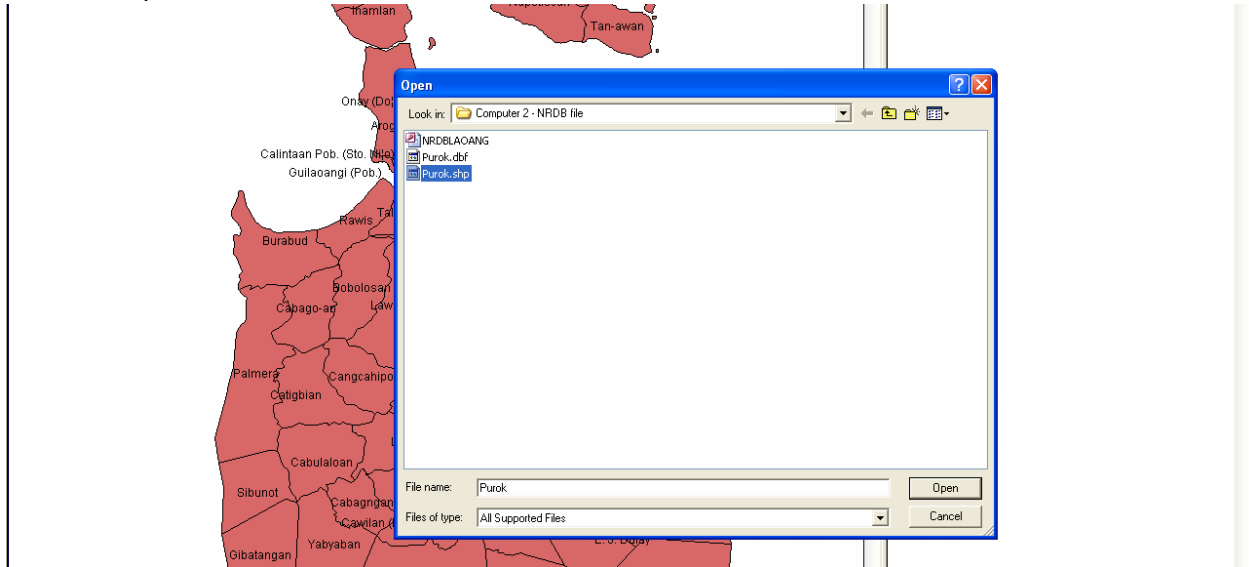


Steps in Merging NRDB files

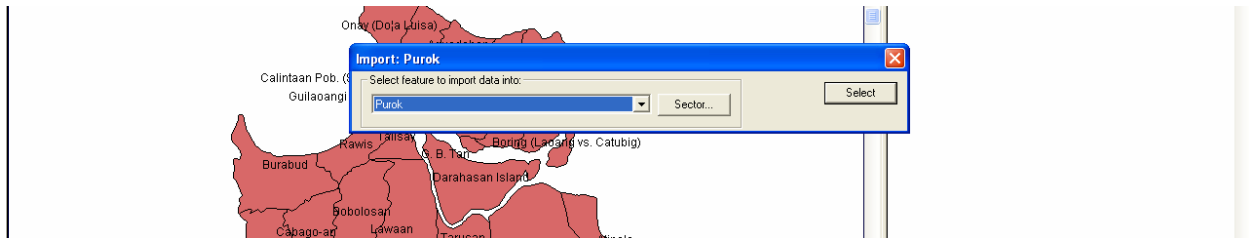
Prepared by the
CBMS Network Coordinating Team of the
Angelo King Institute for Economic and Business Studies

This work was carried out by the PEP-CBMS Network Coordinating Team with the financial support of the Government of Canada provided through the International Development Research Centre (IDRC) and the Canadian International Development Agency (CIDA)

13. Click Open

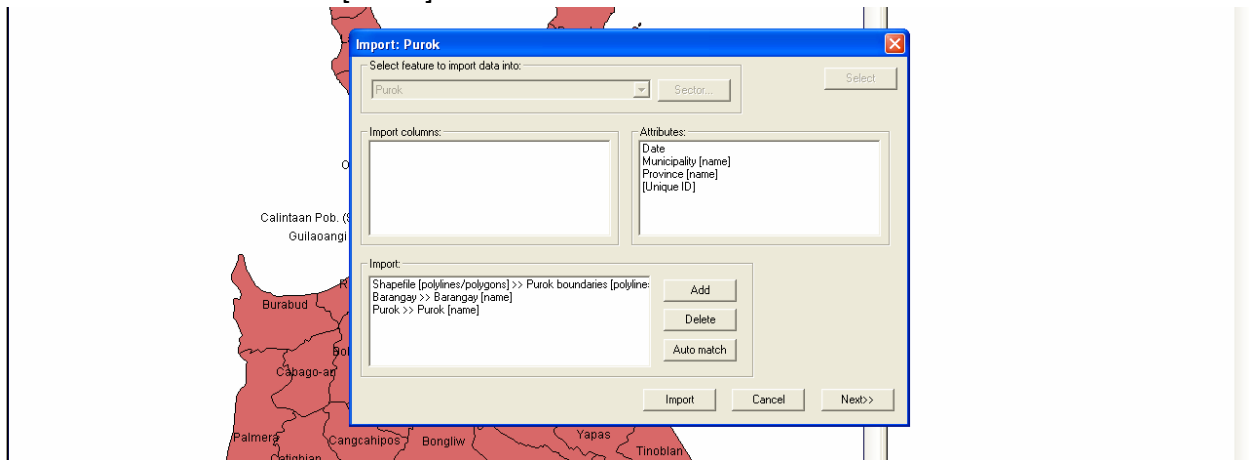


14. Another window will appear asking the user to select feature to import data into:.. Select Purok



15. Match each variable name in the Import Columns with the names in the Attributes box and click Add. Match the ff:

1. Shapefile [polylines/polygons]>>Purok boundaries[polylines/polygons]
2. Barangay>> Barangay[name]
3. Purok>> Purok[name]



16. Click Import

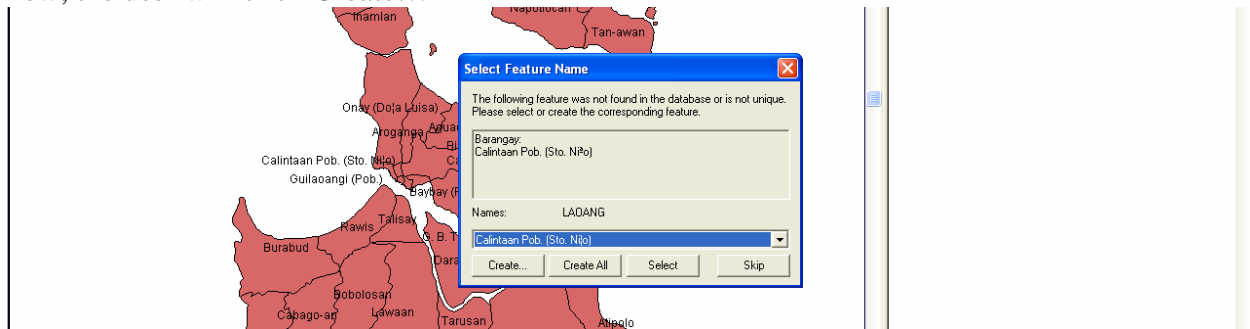
17. Click Next

18. Click the button Create All

19. Click Next

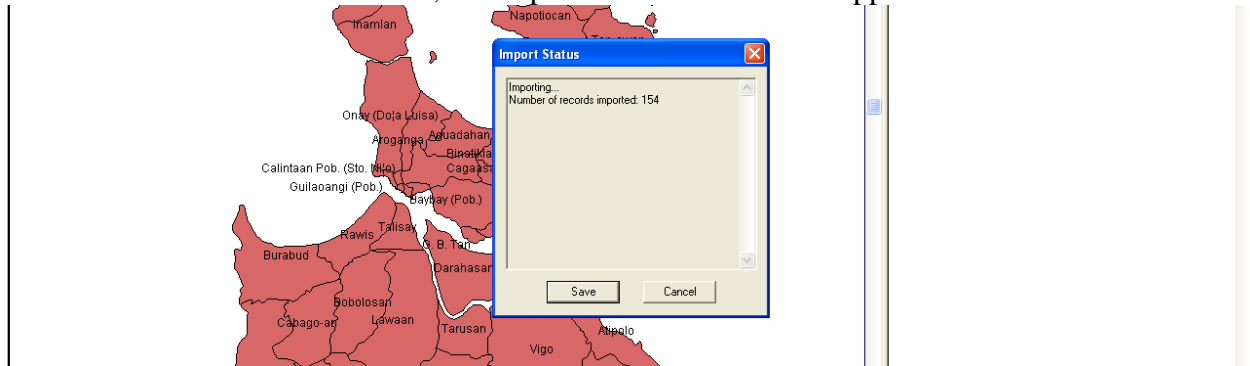
You will encounter this window. It says that the ff feature was not found in the database or is not unique. Please select or create the corresponding feature. In the box is the name of the barangay

Calintaan Pob (Sto. Ni2o) while in the pulldown list, you'll see the name Calintaan Pob. (Sto. Ni!o). This verification is done since the names are not exactly the same because of the ñ. Remember, the system is **space-sensitive (i.e. Calintaan Pob. is different from CalintaanPob.) and case-sensitive (i.e. Calintaan Pob. is different from CALINTAAN POB. or calintaan pob.)**. But if the user is sure that the names correspond to each other, click Select. If the names are different, check the pulldown list for the corresponding name then Select. Or if the name is new, the user will click Create...



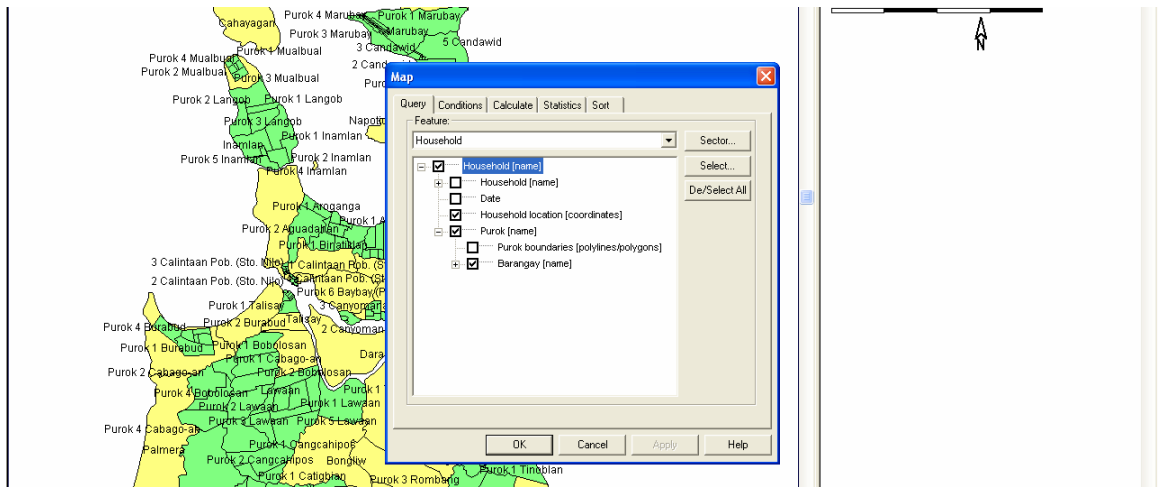
20. Since the names are the same, Click Select

21. After the files have been read, the import status window will appear. Click Save...

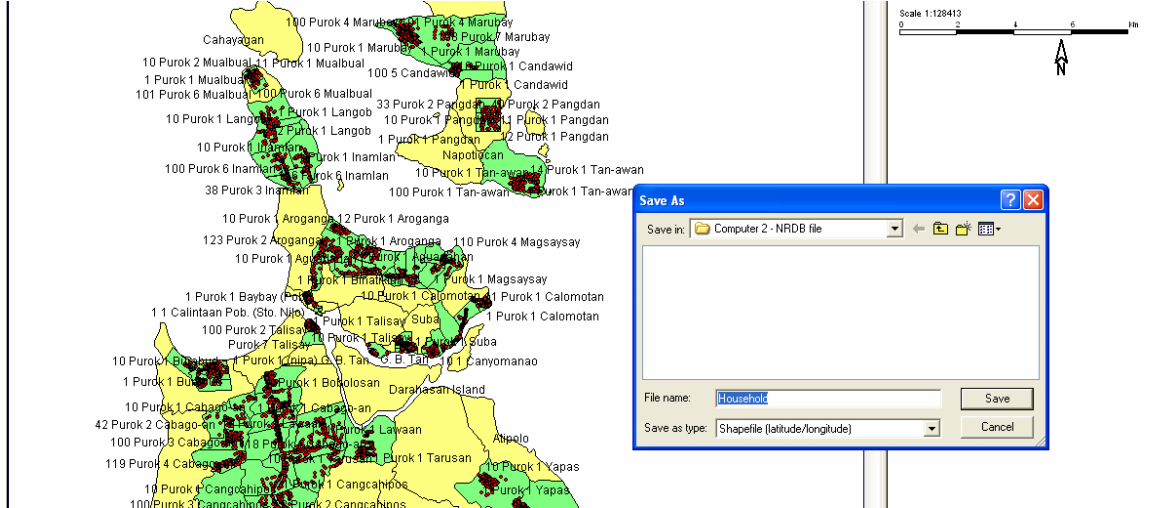


To get the household location from NRDBLaog from computer 2, here are the steps:

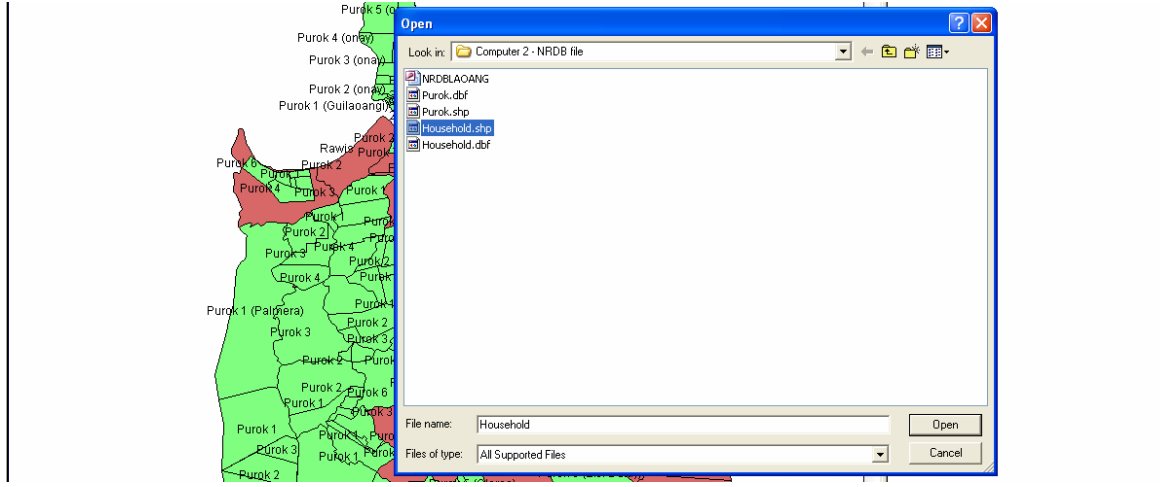
1. click Query
2. In the Query window, select the feature Household
3. Check the following:
 - a. Household [name]
 - b. Household location [coordinates]
 - c. Purok [name]
 - d. Barangay [name]



4. Click Ok
5. Click Close
6. In the main menu, click File, Export, File...

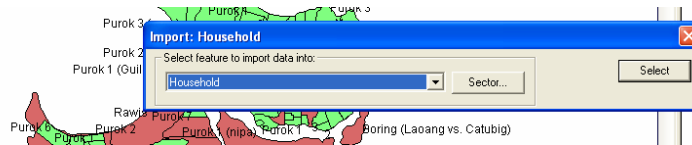


7. Save the file as **Household**
8. Open the NRDB file of Laoang from Computer 1
9. Select File, Import File...



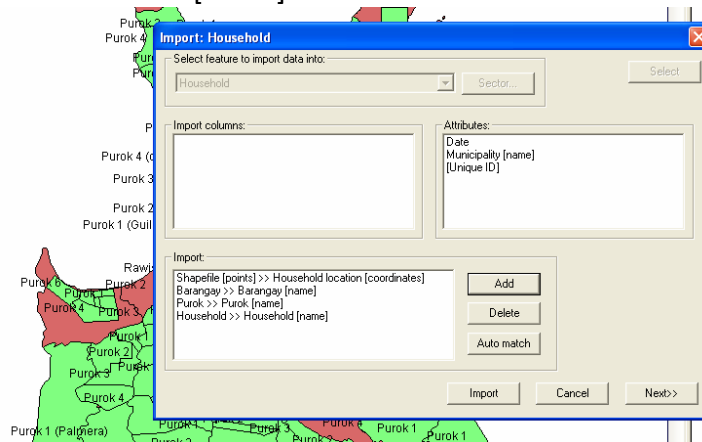
10. Select the file **Household** as saved in #7
11. Click Open

12. Another window will appear asking the user to select feature to import data into:. Select Household



13. Match each variable name in the Import Columns with the names in the Attributes box and click Add. Match the ff:

- Shapefile [points]>>Household location [coordinates]
- Household>> Household[name]
- Barangay>> Barangay[name]
- Purok>> Purok[name]



14. Click Import

15. Click Next

16. Click the button Create All

17. Click Next

18. After the files have been read, the import status window will appear. Click Save...