

Reports, Graphs and Queries

A. Reports

Reports produce tabular outputs of data contained in the database. Reports may be viewed, saved to file, printed or copied to the clipboard. Reports can also be viewed in standard, time-series and sectoral formats.

Reports may be made using simple data selection or by using a query. The report contains header, logo and footer as well as the data. These can be updated in Report Settings.

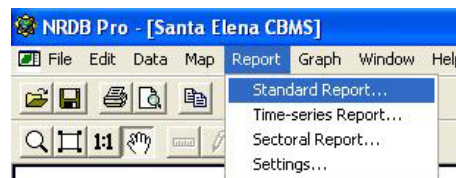
Standard reports consist of a table of columns containing the attributes for the selected features. **Time-series reports** consist of columns containing the selected dates with rows containing the feature name and the corresponding values. **Sectoral reports** contain all data for the selected feature names and for its child features for the currently active sectors.

The report is an html document. Links to files and hotlinks to files, websites and email address may be opened by clicking on the name. The left and right arrows at the top left of the window are used for navigating between links.

Note: File links and hotlinks are created by adding an attribute of type File or Hotlink respectively in the Data Dictionary and then importing to file name in the Time-series Editor dialog.¹

To show all the data on Education and Literacy in all villages in Santa Elena, here are the following steps:

From the *Report* menu, select **Standard Report**.
The *Standard Report* dialog is displayed.



The standard report window will appear.

Choose the following
Feature:

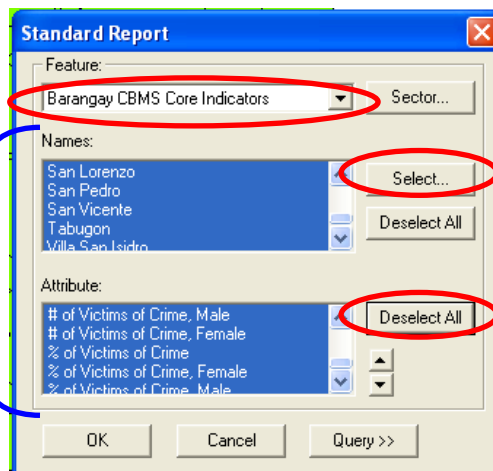
Barangay CBMS Core Indicators

Names:

Click the button **Select All** to select
all barangays

and for the Attribute

Click the button **Select All** to select
all indicators



Here is the sample output:

¹ NRDB Help
Reports, Graphs and Queries
Module 3 Training

NRDB Pro - [Report - Barangay CBMS Core Indicators , Santa Elena]

Santa Elena CBMS
Municipal Hall, Magsaysay St.
Santa Elena
Camarines Norte
Philippines

Barangay CBMS Core Indicators , Santa Elena

Municipality	Barangay	Date	# of members 0-5	# of members 0-5, Male	# of members 0-5, Female	# of Child death	# of Child death, Male	# of Child death, Female	% of Child death	% of Child death, Male	% of Child death, Female	# of Births (less than 1 year old)	# of women who died due to pregnancy causes	% of women who died due to pregnancy causes	# of malnourished children	# of malnourished children, Male	# of malnourished children, Female
Santa Elena	Villa San Isidro	2011	790	423	367	2	2	0	0.3	0.5	0	126	0	0	6	4	2
Santa Elena	Tabugon	2011	111	67	44	1	0	1	0.9	0	2.2	9	1	10	37	22	15
Santa Elena	San Vicente	2011	576	267	309	0	0	0	0	0	0	85	0	0	3	0	3
Santa Elena	San Pedro	2011	279	160	119	2	1	1	0.7	0.6	0.8	46	0	0	3	0	3
Santa Elena	San Lorenzo	2011	235	125	110	1	1	0	0.4	0.8	0	42	0	0	0	0	0
Santa Elena	Salvacion	2011	114	71	43	0	0	0	0	0	0	14	0	0	7	4	3
Santa Elena	Rizal	2011	103	62	41	1	0	1	1	0	2.4	14	1	6.7	10	7	3
Santa Elena	Pulongquit	2011	437	236	201	1	1	0	0.2	0.4	0	81	0	0	55	34	21
Santa Elena	Poblacion	2011	862	464	398	3	2	1	0.3	0.4	0.3	122	0	0	3	3	0
Santa Elena	Plandel	2011	108	46	62	0	0	0	0	0	0	10	0	0	0	0	0

B. Graphs

Graphs enable the graphical output of numerical data. There are three types of graphs available in the CBMS-NRDB – Histograms, Time-Series and Pie Charts.

The **Histogram Graph View** outputs the results of a standard graph or query as a histogram graph. The numerical attributes selected are plotted on the graph. The label attributes selected are displayed on the x axis.

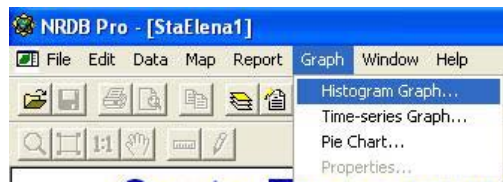
The **Time-Series Graph View** outputs the results of a standard time-series graph or query as a time-series graph. The graph consists of numerical values plotted against a range of dates.

The **Pie Chart** outputs the results of a standard selection or a query as a pie chart. The area of each slice of the pie is proportional to its share of the total.²

As an example, use histogram to show proportion of households with income below poverty threshold for all the villages. Here are the steps:

Select **Histogram Graph** from the *Graph* menu.

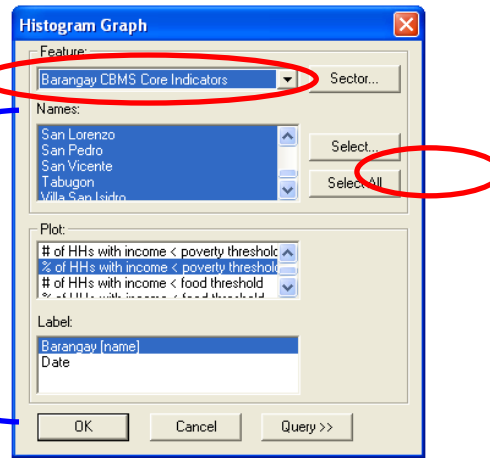
² NRDB Help
Reports, Graphs and Queries
Module 3 Training



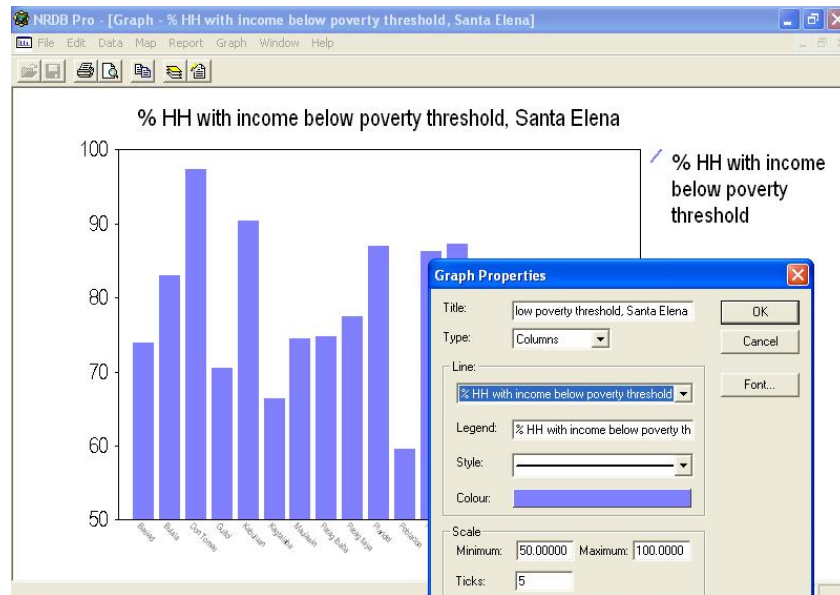
Choose the following Feature:
Village Income and Employment

Plot:
% of HH with income below poverty threshold

Label:
Village (Barangay) [name]



Double-click on the chart to show the properties and the user can modify colors, type, and others. Here is the sample output:



C. Query³

The query dialog allows for retrieval of data to be displayed as reports, graphs or as a map layer.

The basic functionality of the query dialog is similar to the Add Layer dialog for maps and the report and graph dialogs. For maps you should select the feature, names of features, one attribute of type polylines, polygons, coordinates or image and one attribute for the label. For reports and graphs the attributes will include numeric and text values.

Queries also allow data to be retrieved according to conditions such as the value of their attributes or the selection of data for a specific period. Attributes for parent features may also be selected. Queries may include calculations and also the production of statistics.

Feature *Select the feature to be used in the query.*

Attributes *Check the box to left of the attributes to appear in the graph, map or report. For attributes of type Boolean or Link, expand the attribute by clicking on the small plus [+] to the left of the name. A list of values will appear. By default all values are checked. Selecting specific values will result in only features with those values being retrieved. Attributes belonging to parent features can also be selected. To view the attributes of parent features click on the small plus [+] to the left of the bottom-most attribute. For maps, one attribute of type Coordinates or Polylines/Polygons must be selected. Text or numerical attributes will be used as labels.*

Sector *Enables the selection of a type of feature by sector.*

Select *Enables the selection of features by parent feature.*

Select All *Selects / deselects all the child attributes of the currently selected attribute.*

For instance, selecting “Standard Report” will display only the attributes directly owned by the feature selected. On the other hand, using “Query>>”, variables that can be generated in a single report can come from other associated/linked tables. In the previous example, only data for the feature Barangay CBMS Core indicators was shown. Using query, the user can also tick parent features and its attributes which can be shown in the report.

³ NRDB Help
Reports, Graphs and Queries
Module 3 Training

